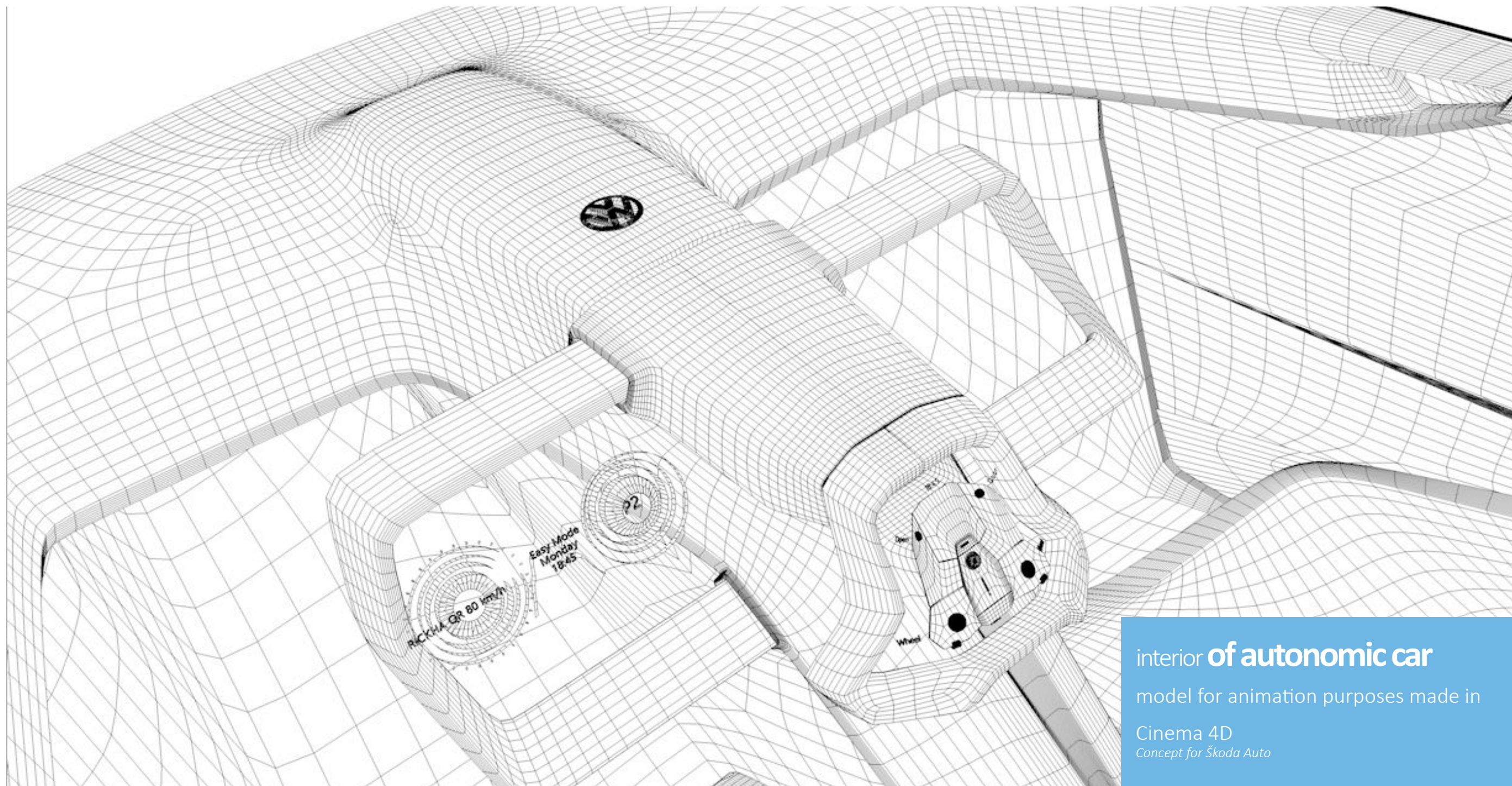


Mesh Modeling of Car Concept

Skin and Bones construction / project for Škoda auto / 2014



interior **of autonomic car**

model for animation purposes made in

Cinema 4D

Concept for Škoda Auto

Video presentation Vimeo >>>

Video presentation Vimeo >>>

<https://vimeo.com/117219244>

Autonomical car **RICHSHAW II**

Skin and Bones construction / project for Škoda auto / 2014

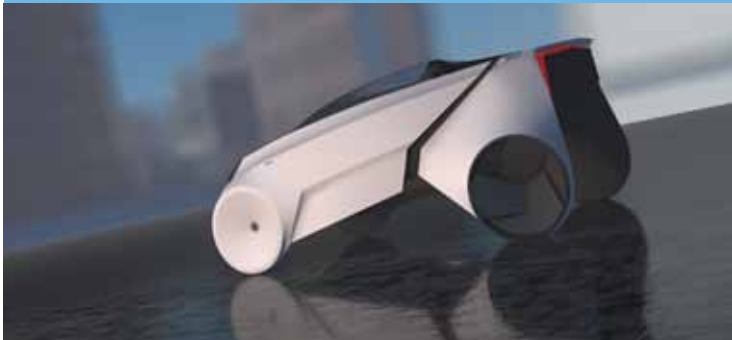
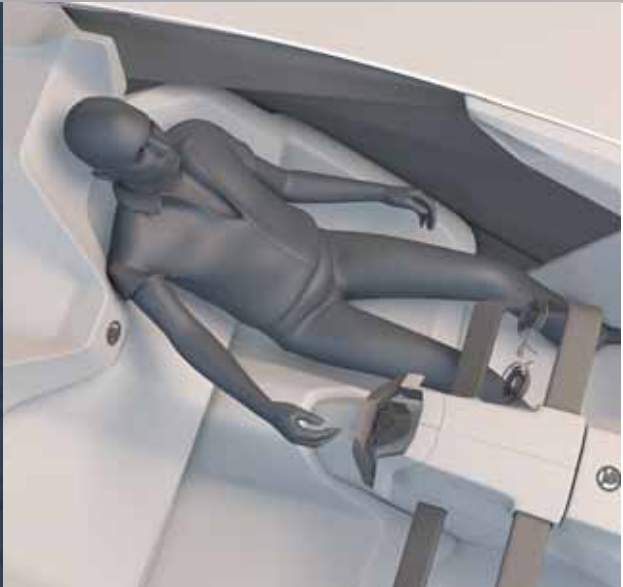


Škoda
Rickshaw 2
...



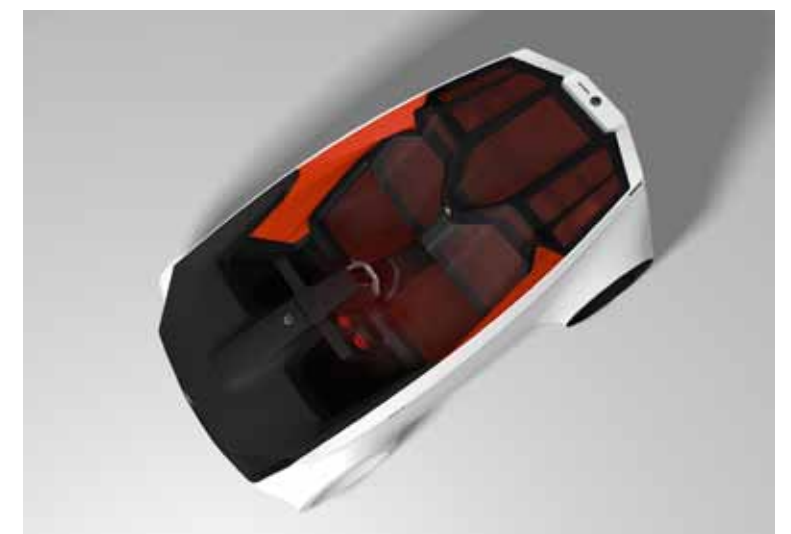
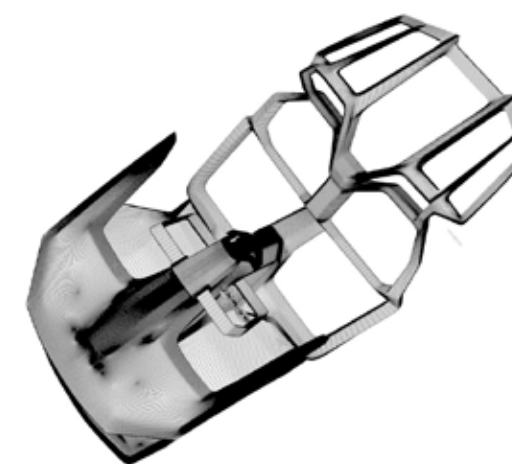
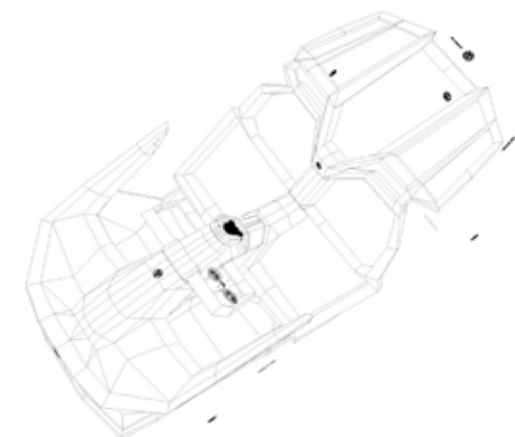
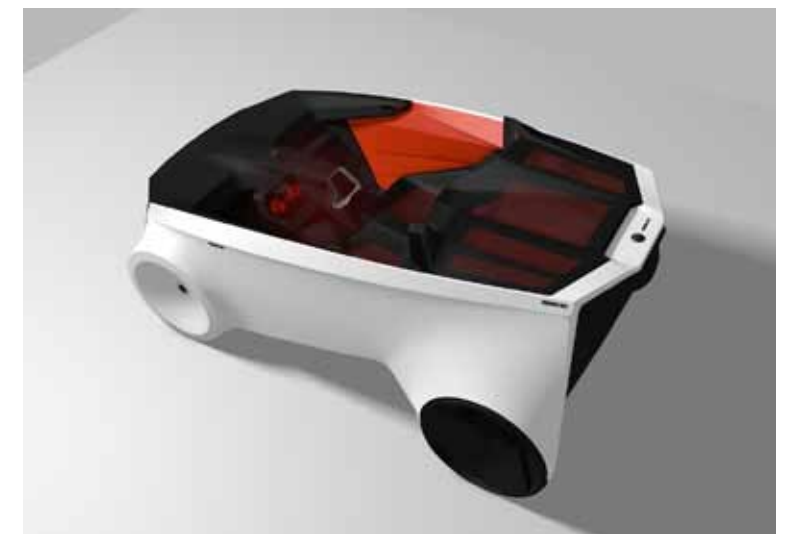
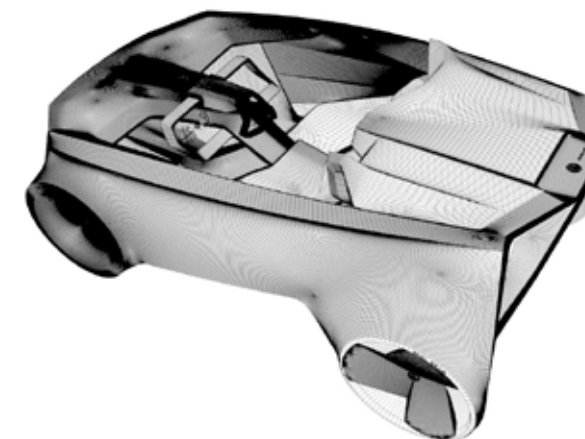
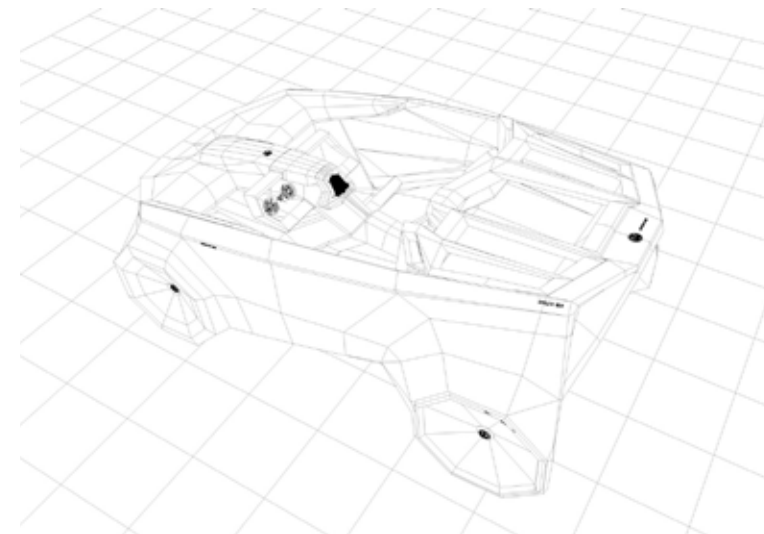
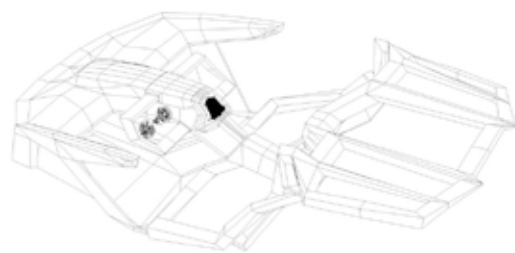
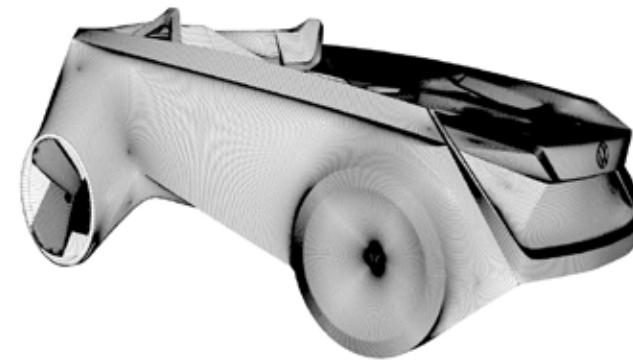
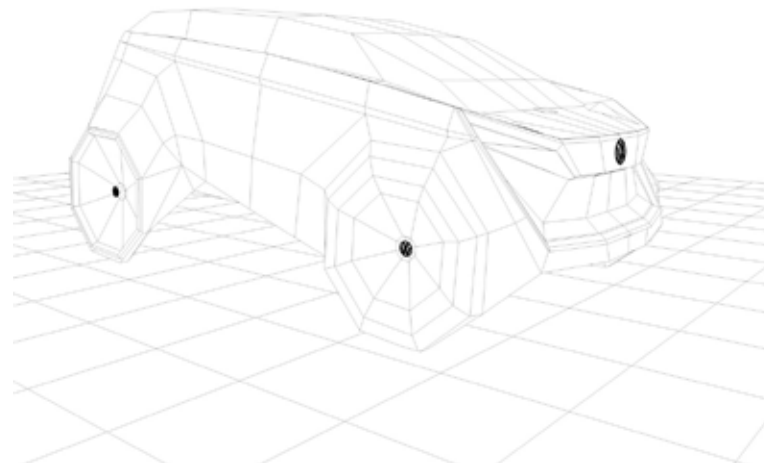
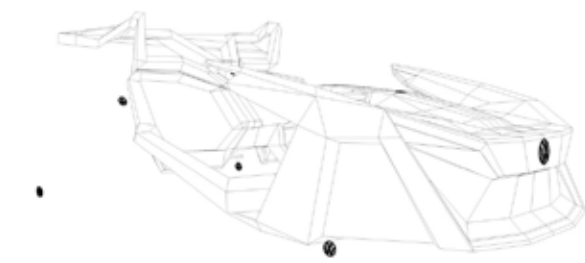
redesign **rickshaw sport way**

After I graduated with my project Škoda Rickshaw I felt strong need to shape it one more for better a accepting with public. I willy wanted to make sharp design with strong face.



Mesh Modeling of Car Concept

Skin and Bones construction / project for Škoda auto / 2014

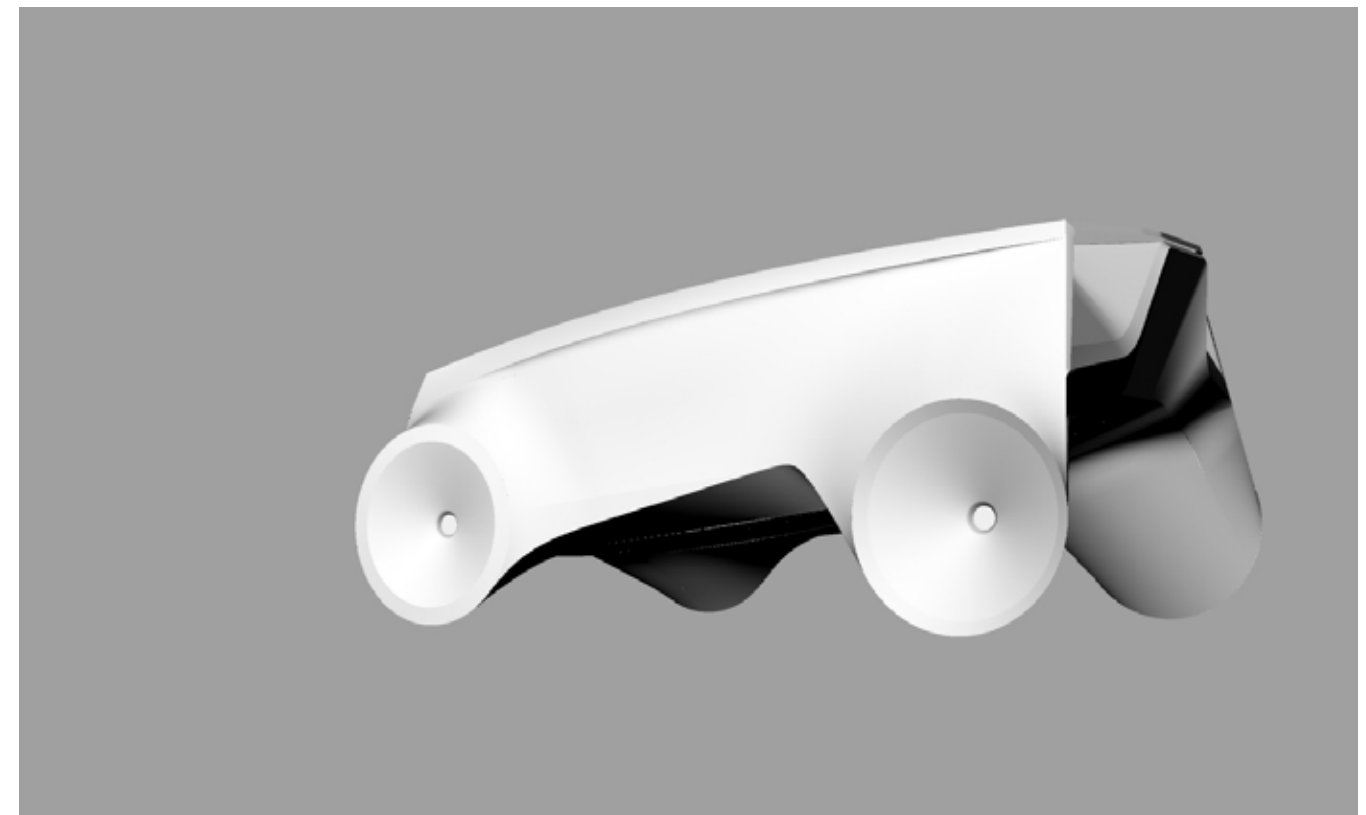
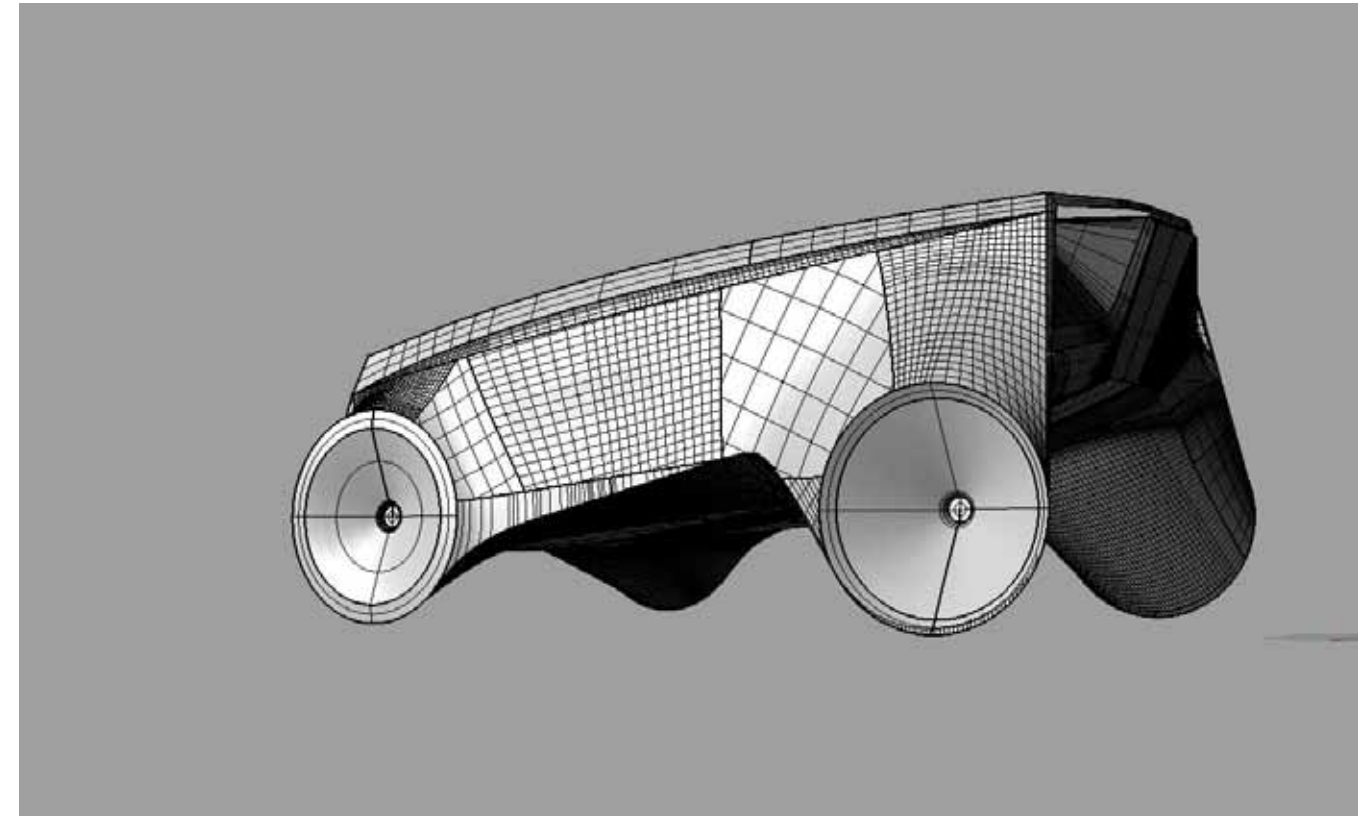
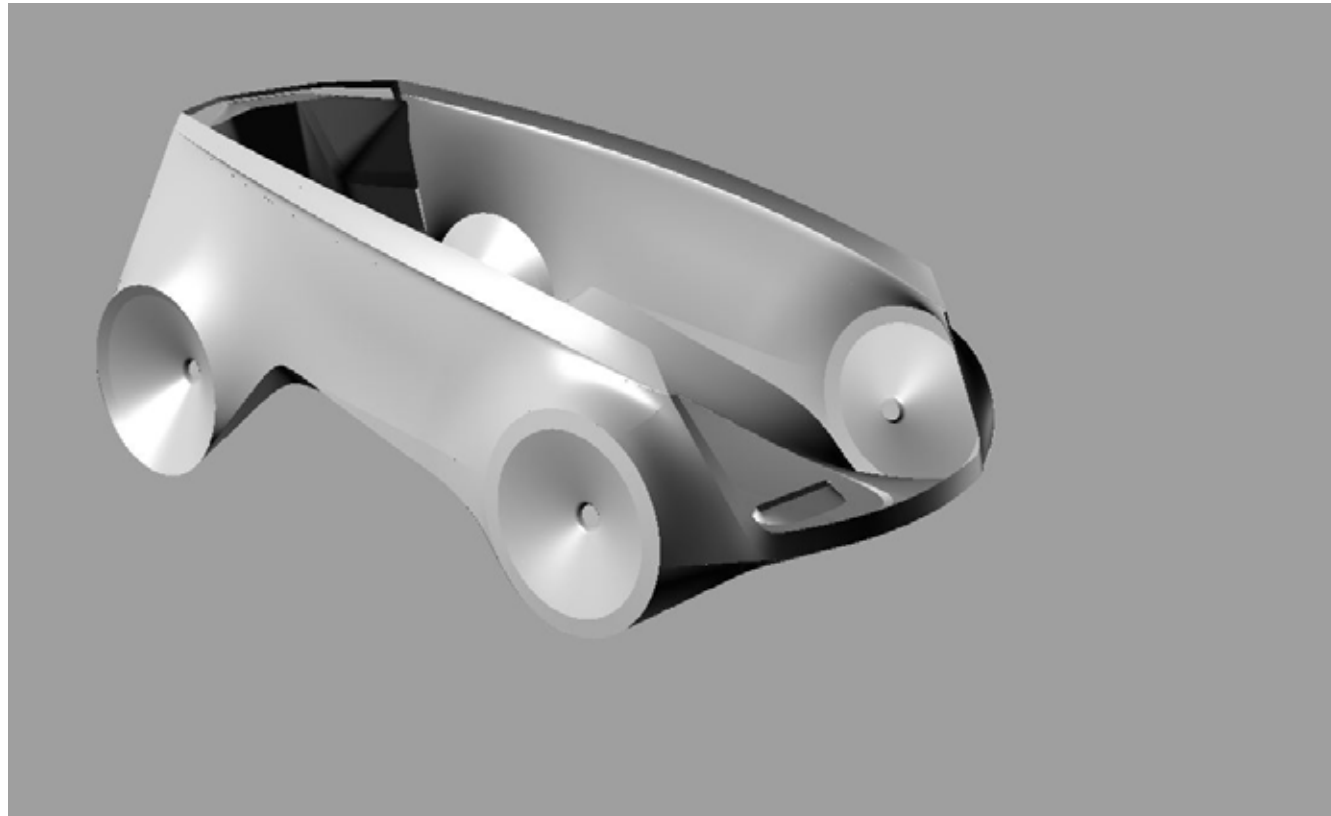


model for animation purposes made in Cinema 4D

Nurbs Modeling of Car exterior

Rhinoceros 4 / model for CNC mill production

model for CNC mill production



design **of** autonomic car

Concept for Škoda Auto

Photogrammetry scan **3D scan**

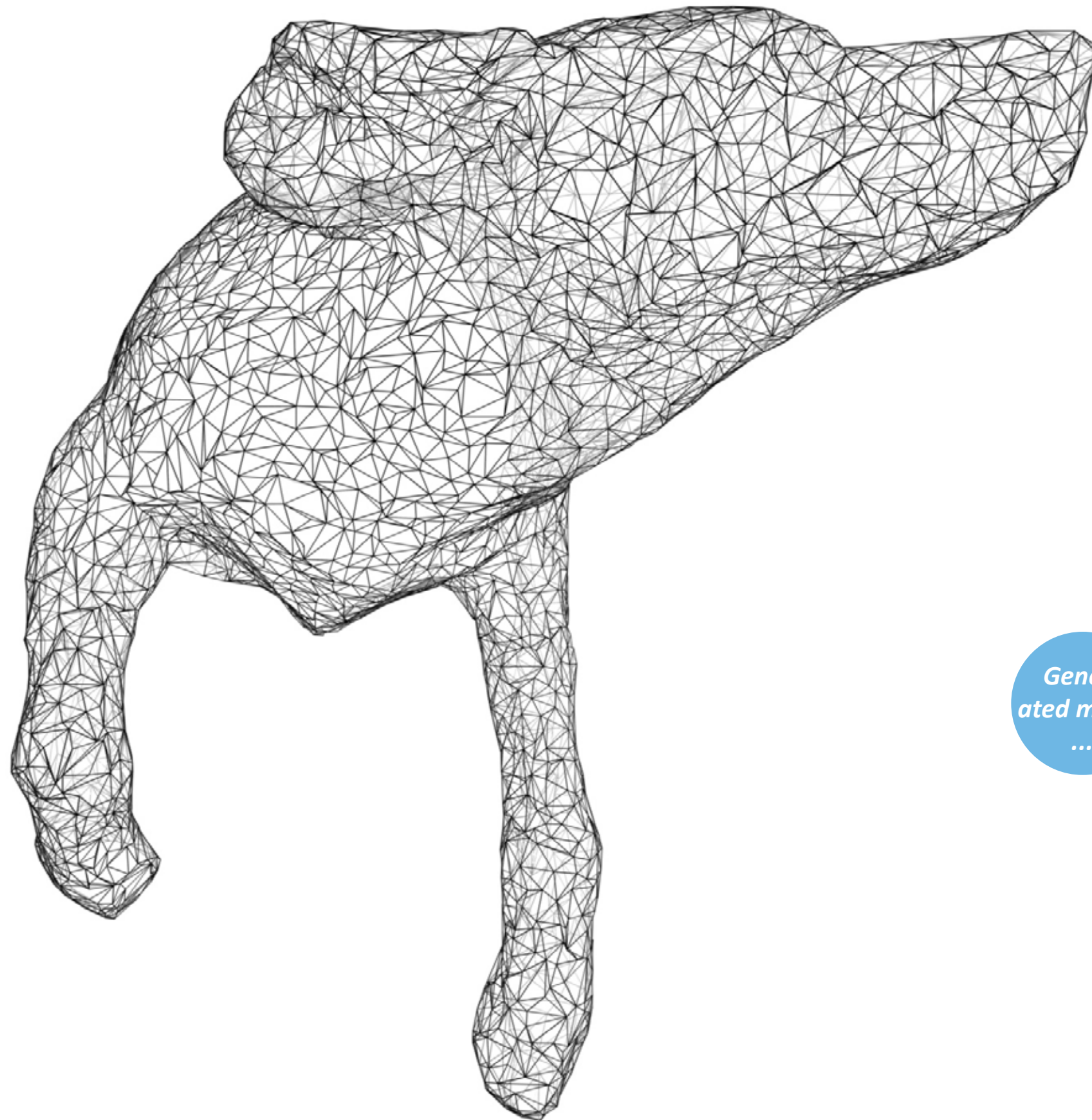
Plaster sculpture scan / my experiments with capturing



60 Photos

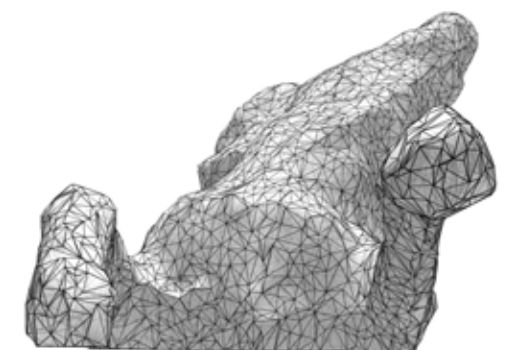
Generated
Model

Autodesk 3D Catch



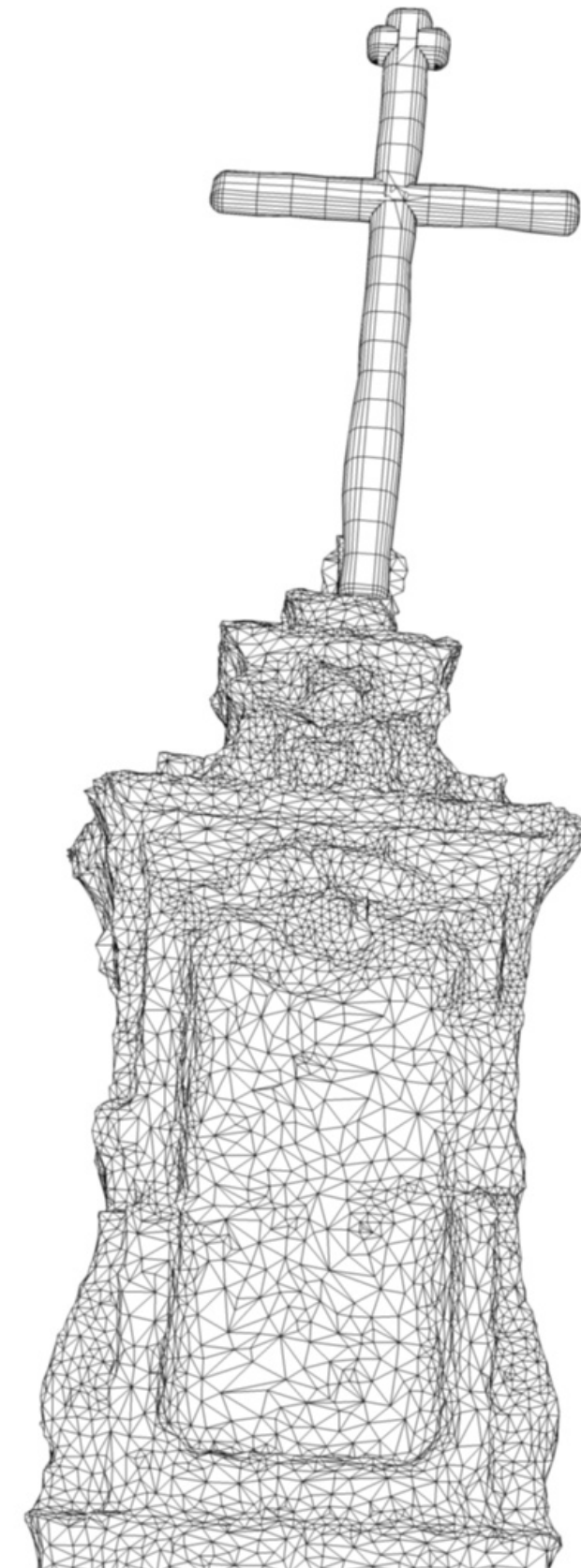
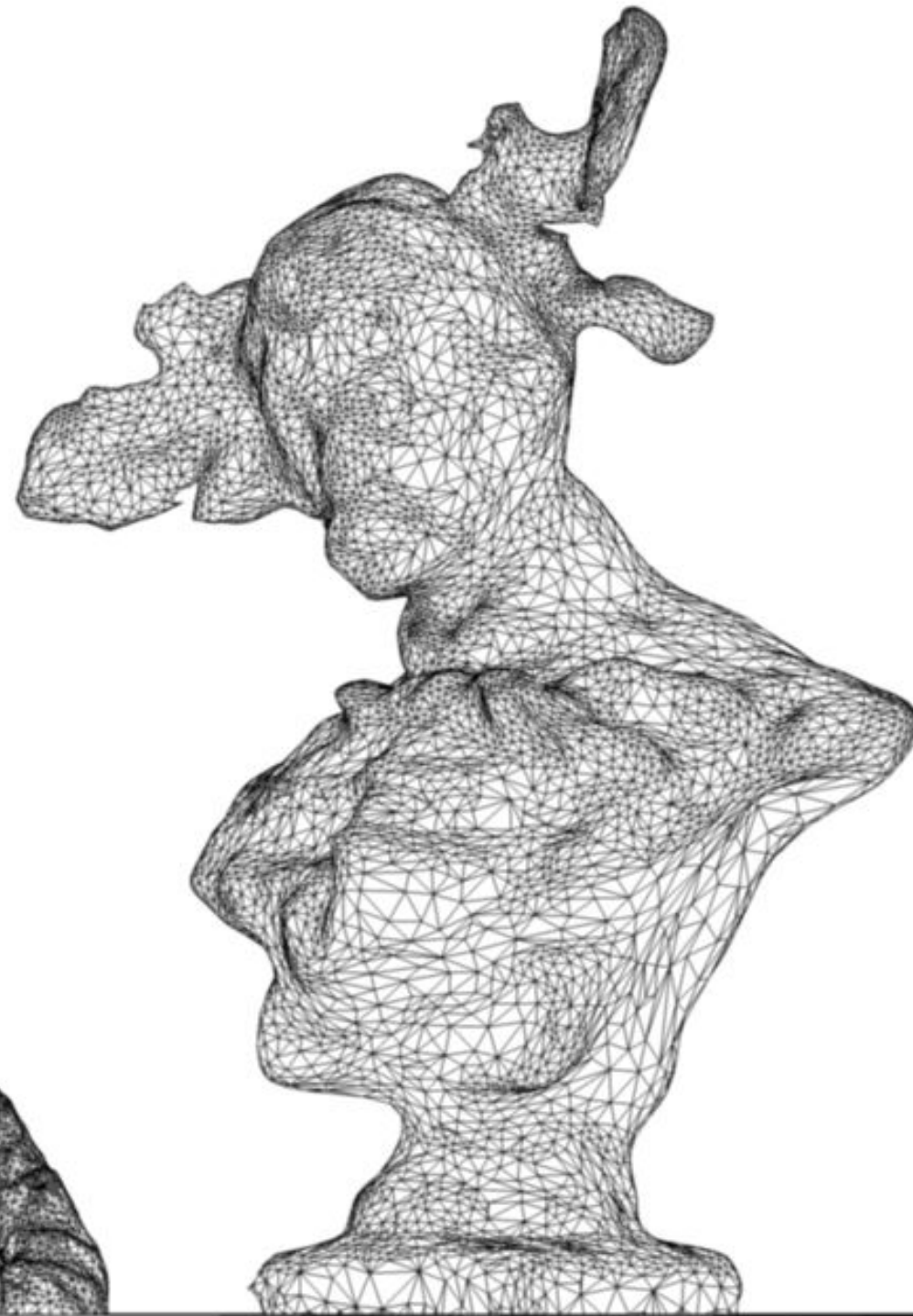
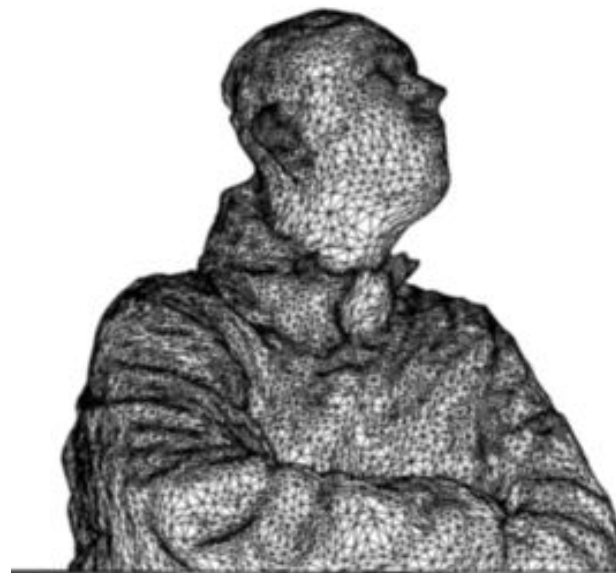
*Gener-
ated model*

...



Photogrammetry scan **3D scan**

Plaster sculpture scan / my experiments with capturing



Scene Generated With **60 photos**

Technology of Photogrammetry is not perfect, but result is interesting.

Photogrammetry scan 3D scan

models for rapid prototyping / my experiments with capturing

 60 Photos
Generated Model
Autodesk 3D Catch



Model soueces



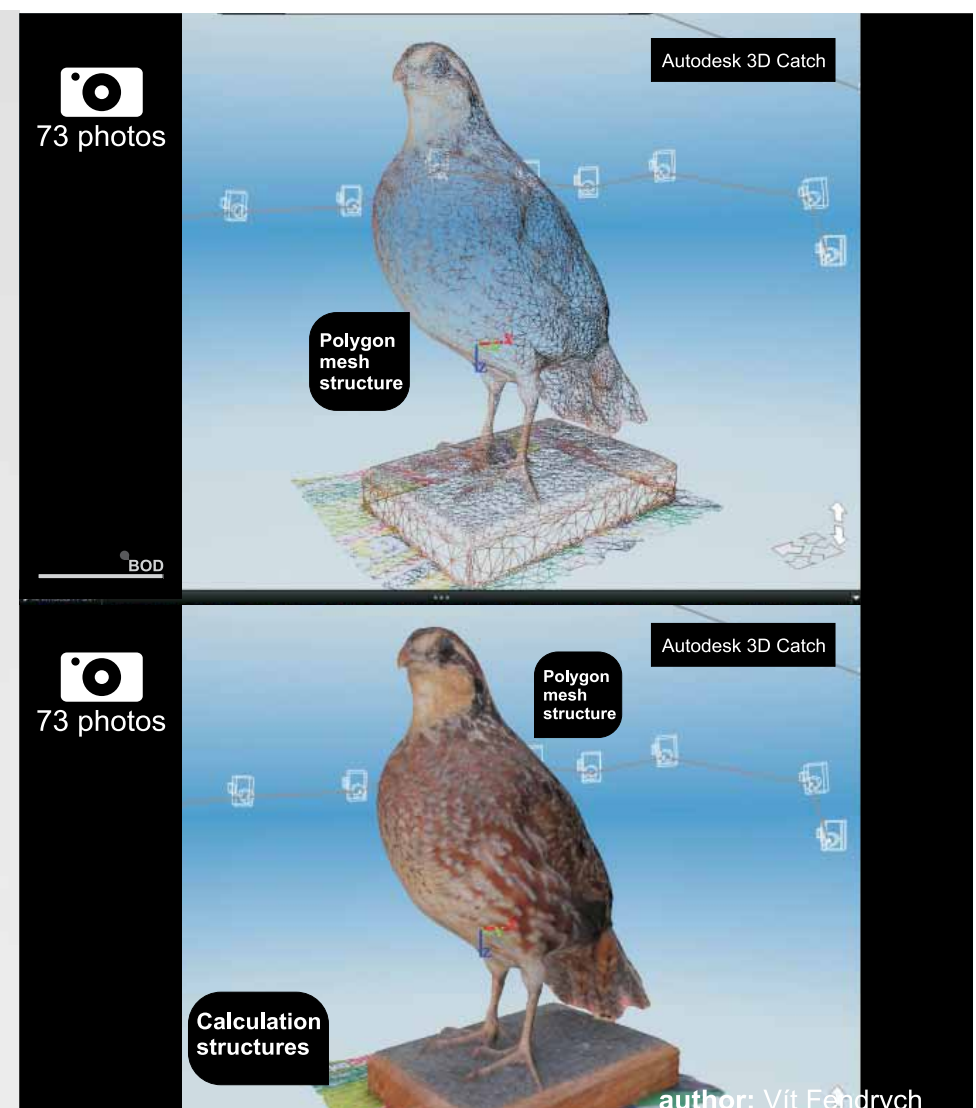
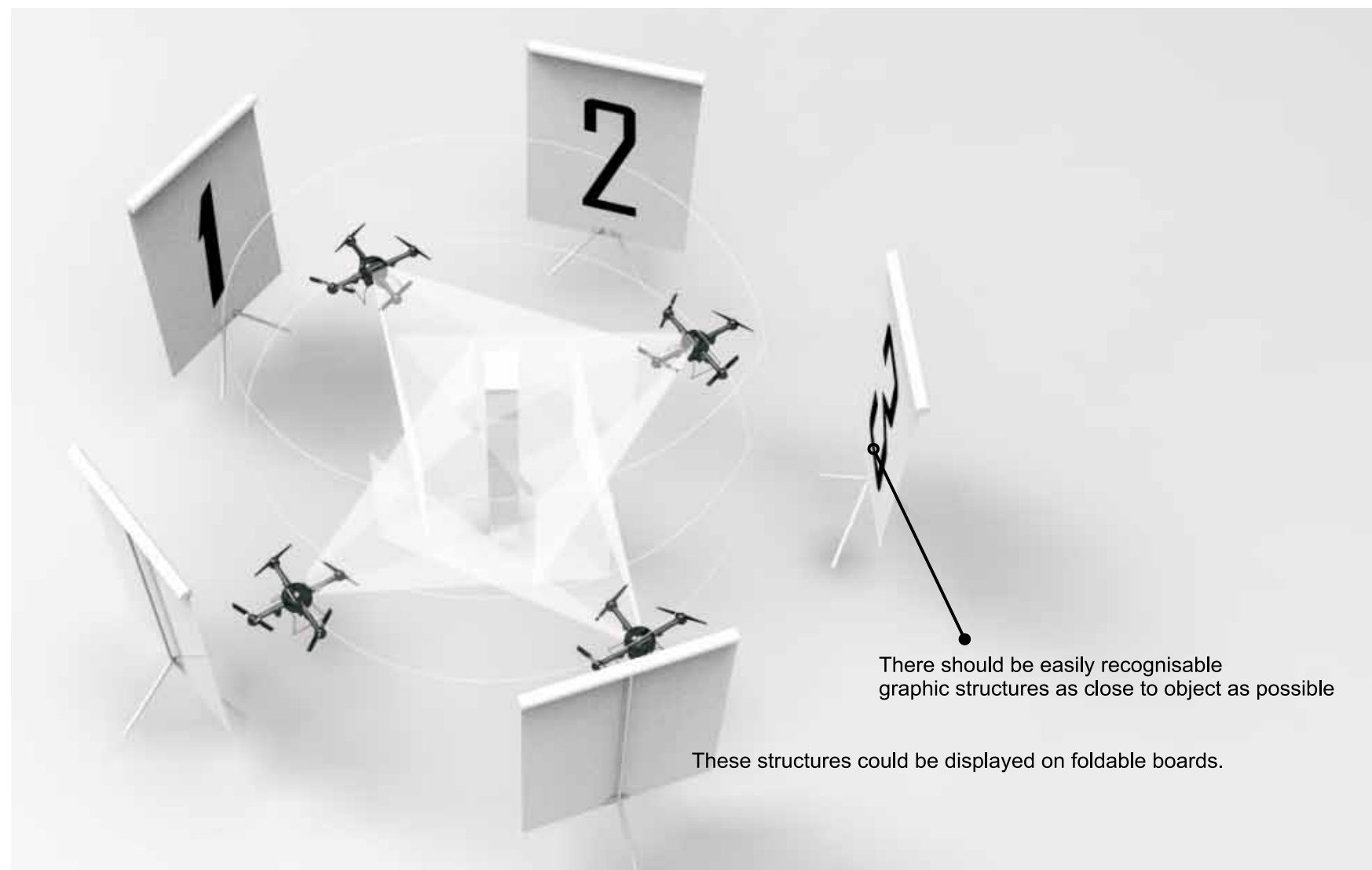
Generated Model



Generated Model

3D PRINTED

Zprinter 650

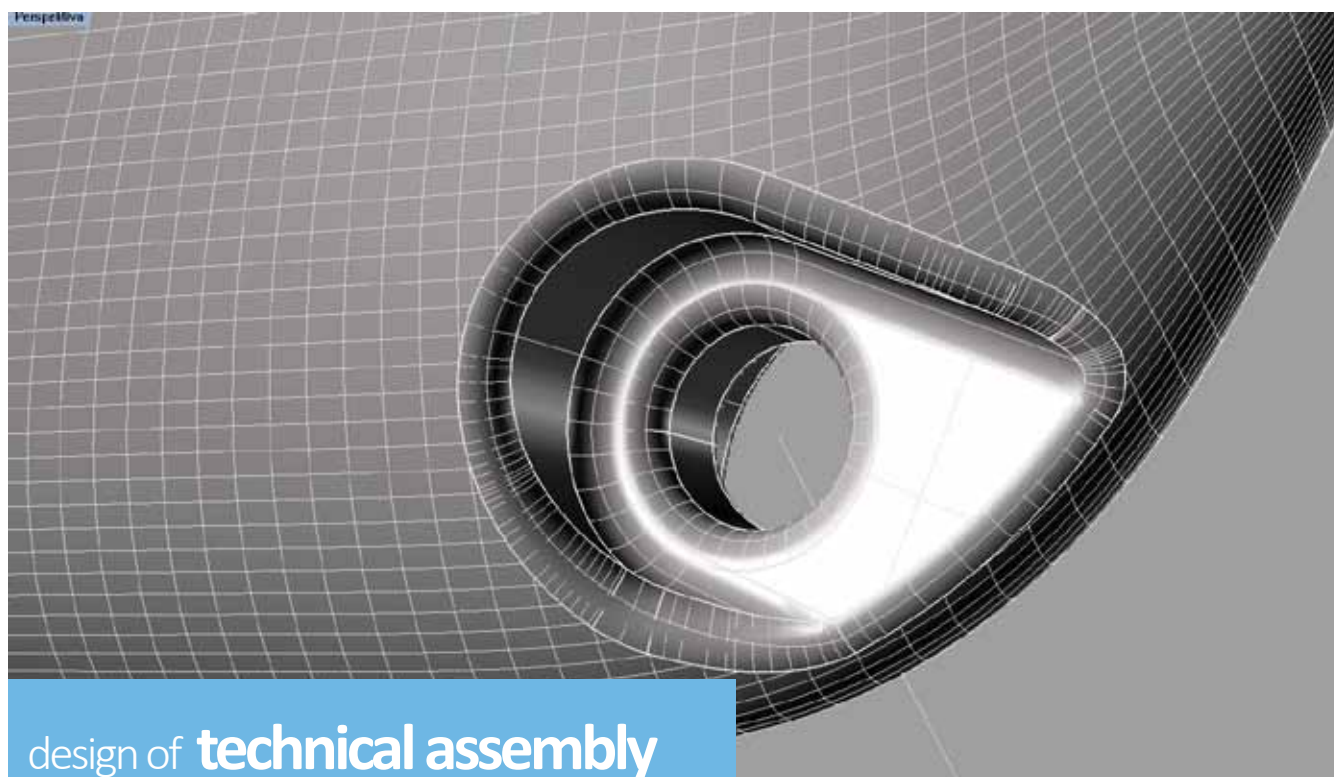
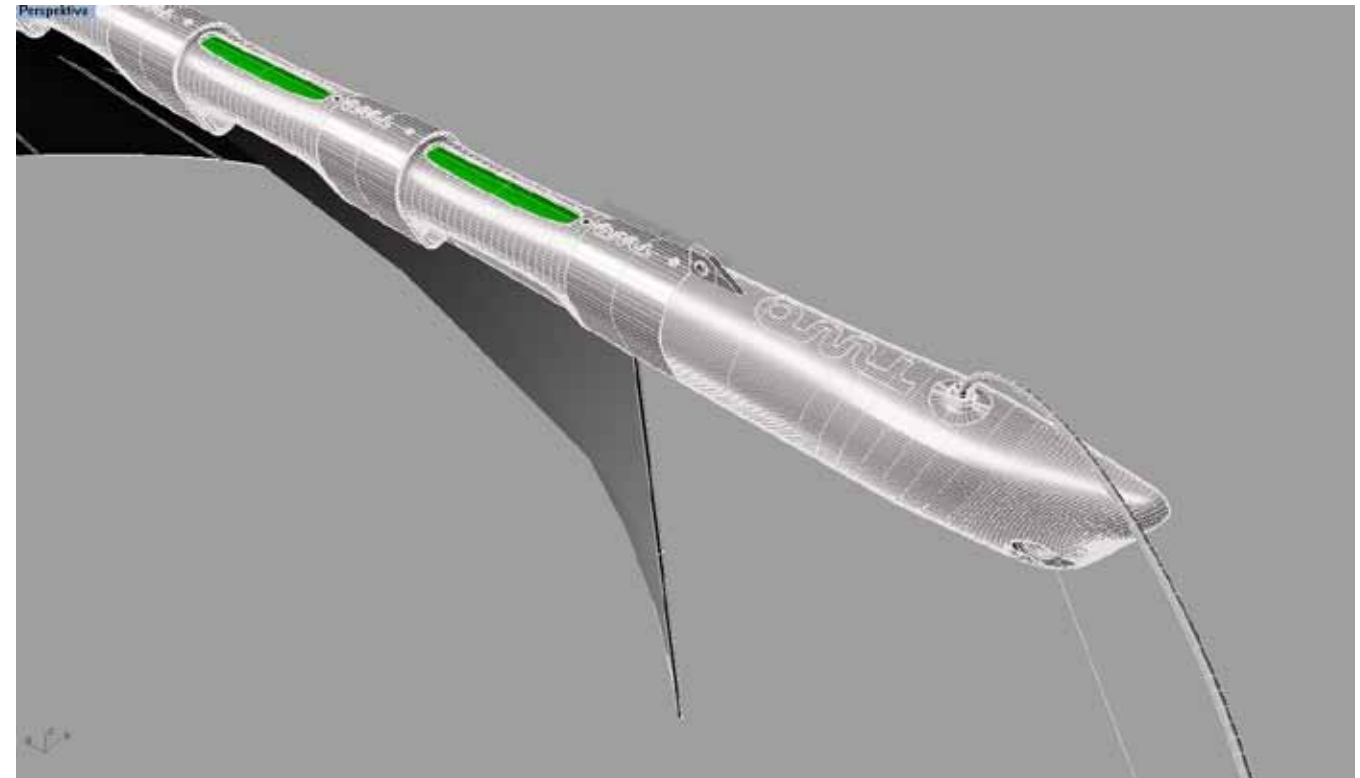


Nurbs Modeling of power plant

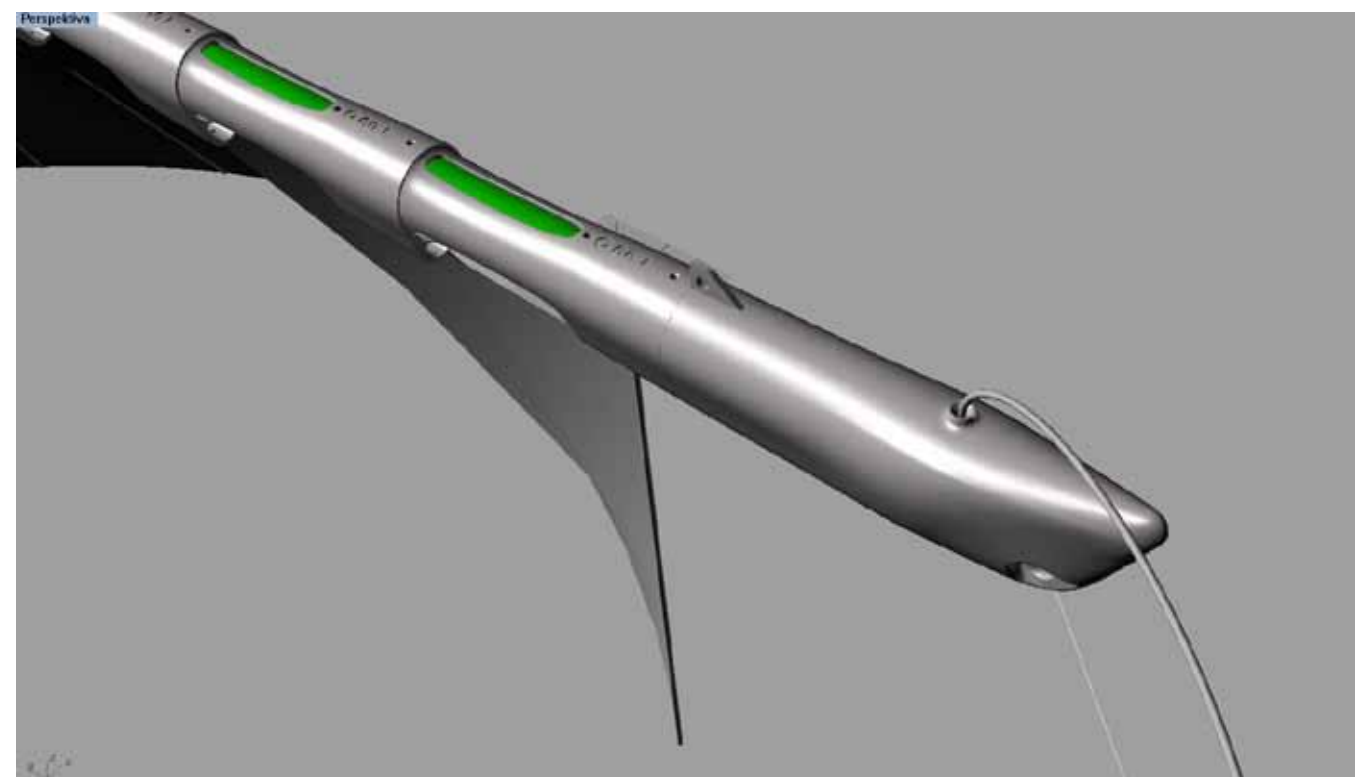
Energy of water/ model for rapid prototyping



model for rapid prototyping



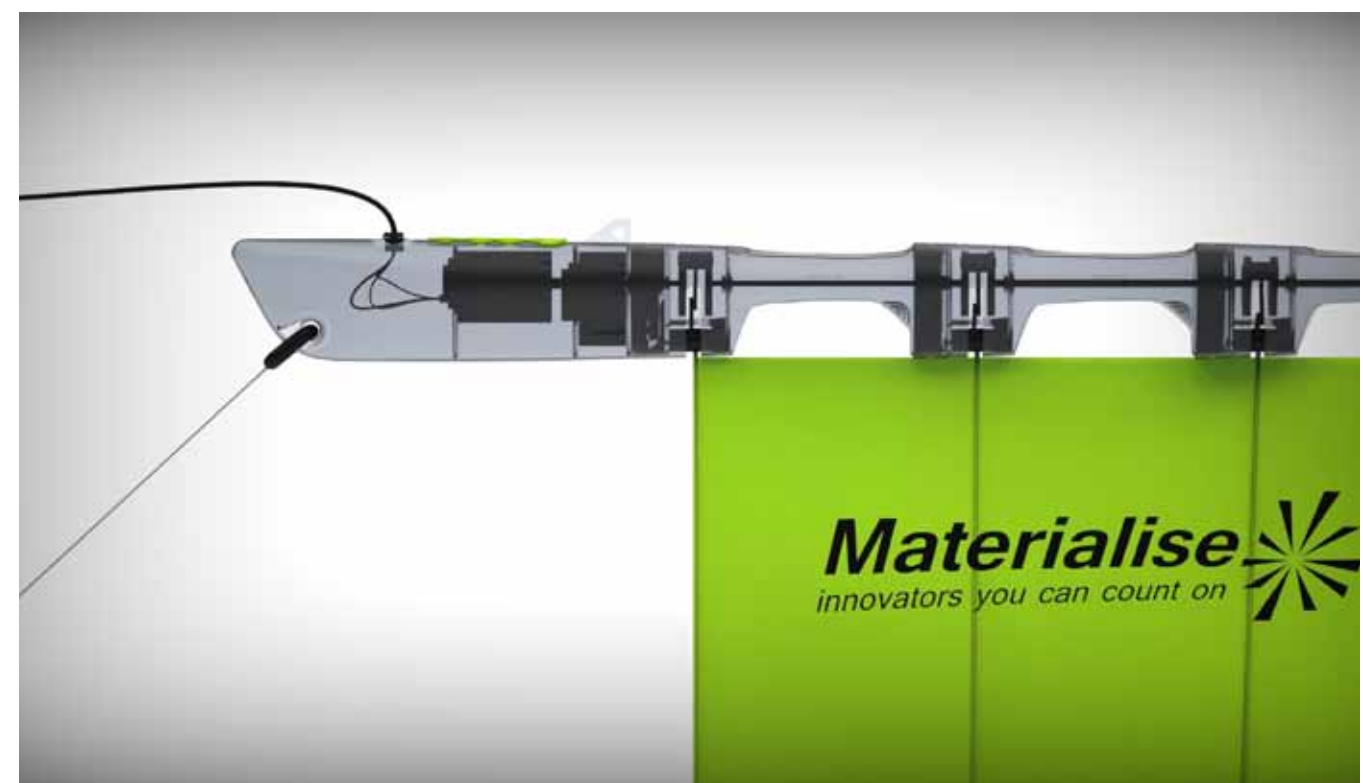
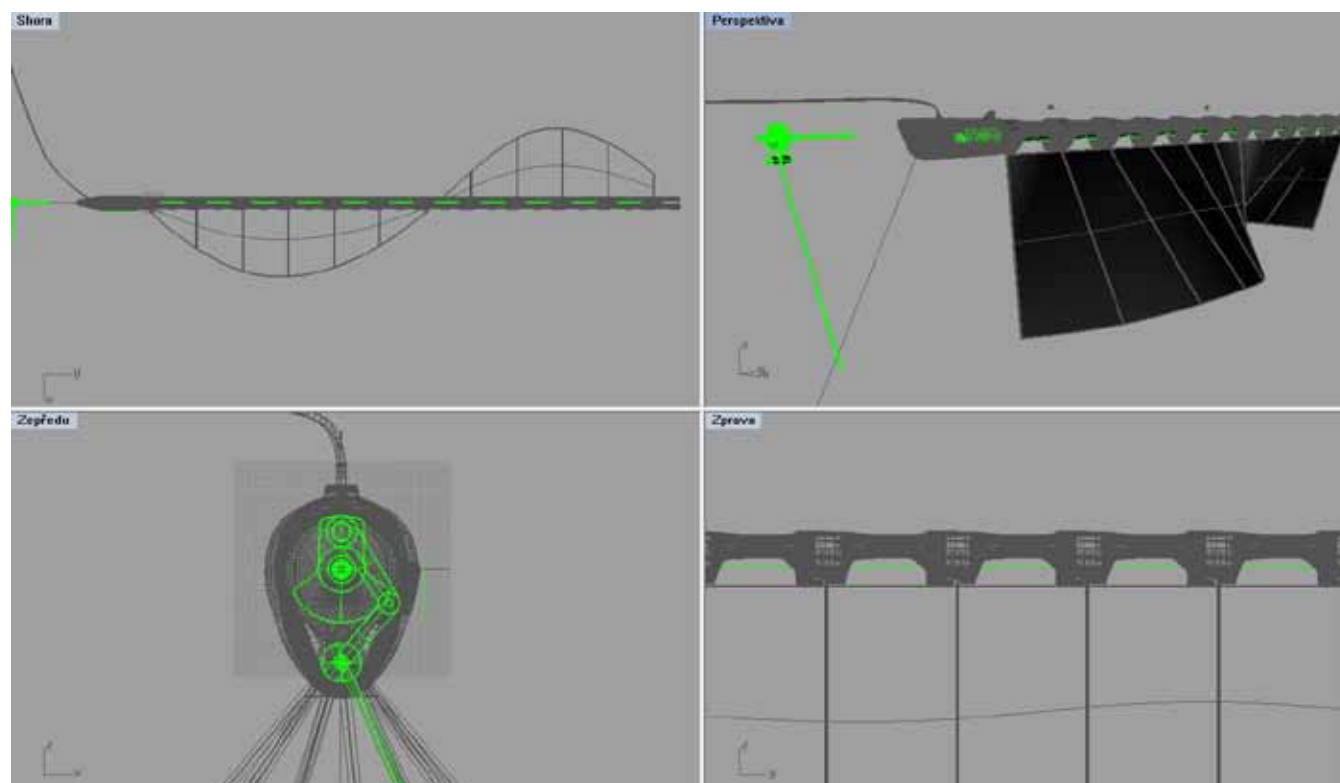
design of **technical assembly**
Electric plant made in cooperation with Materialise



Nurbs Modeling of power plant

Energy of water/ model for rapid prototyping

model for rapid prototyping

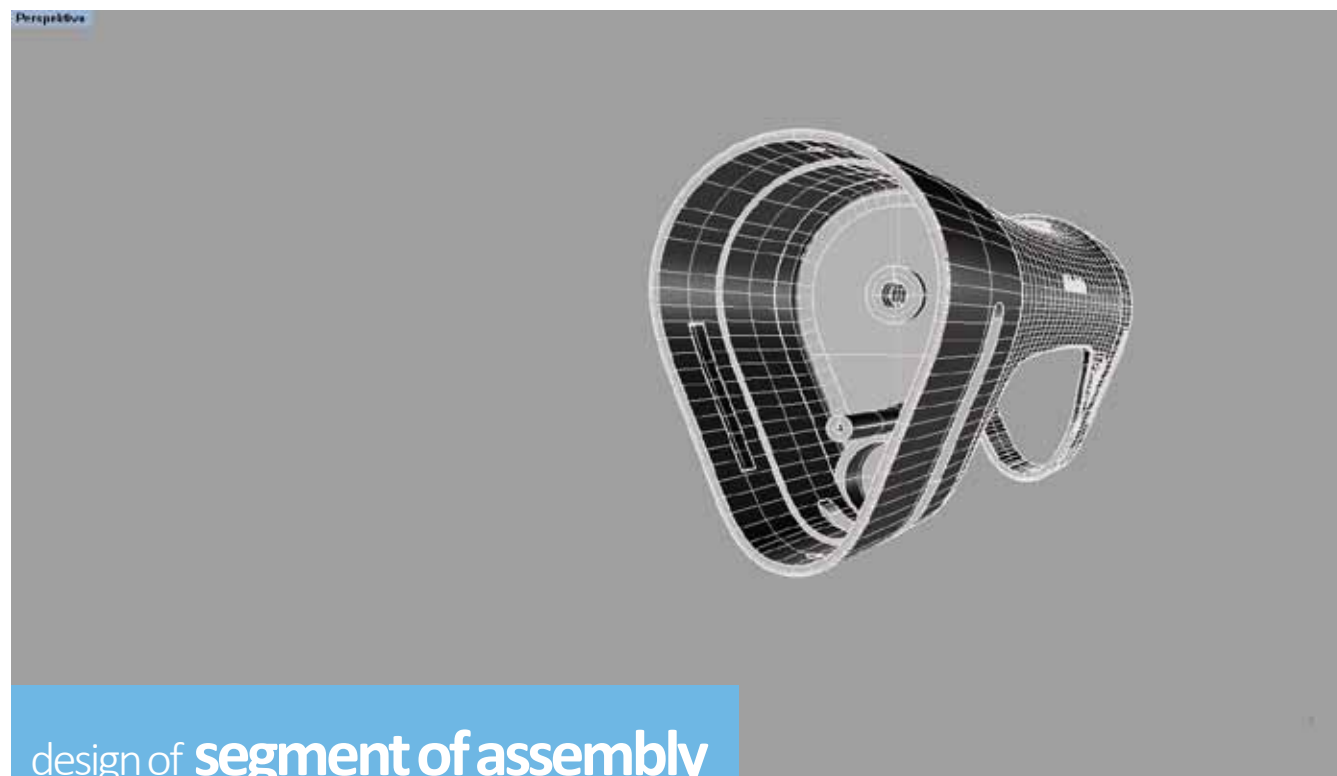
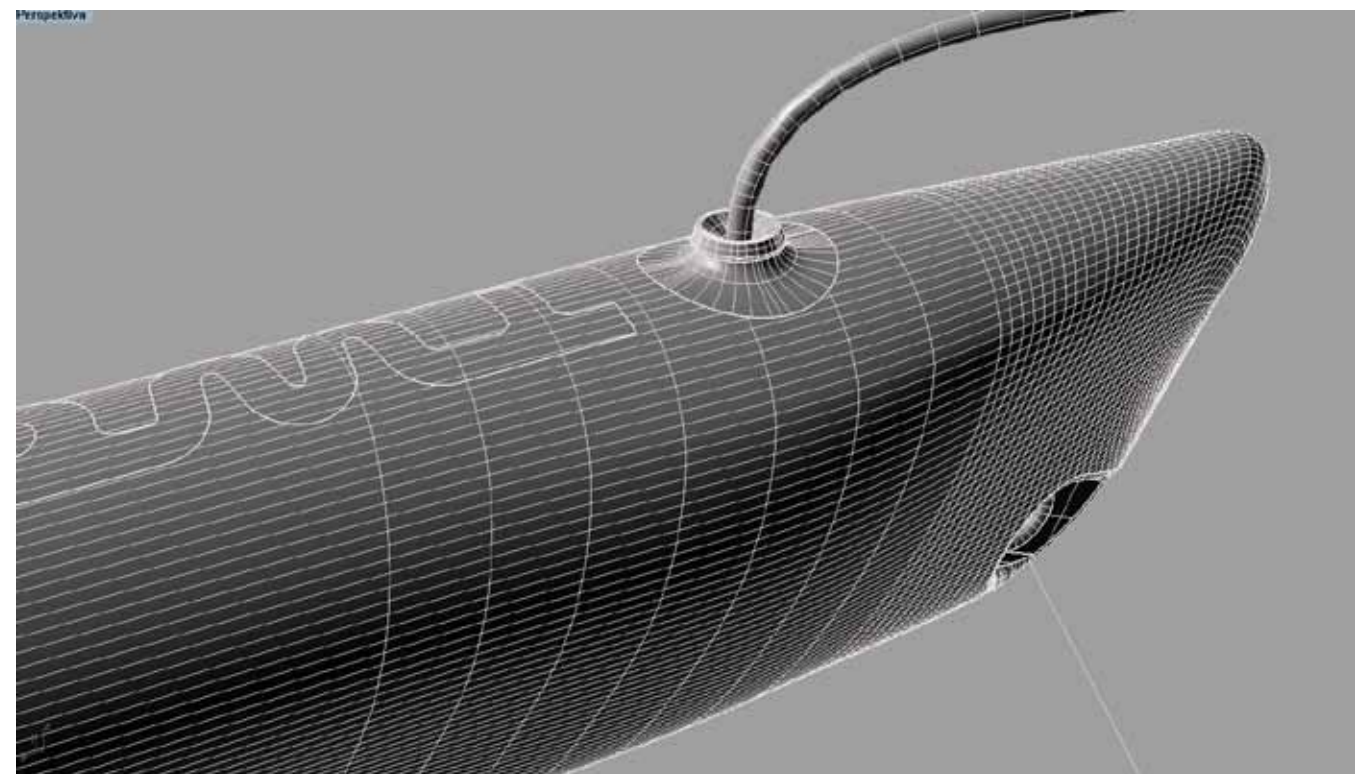
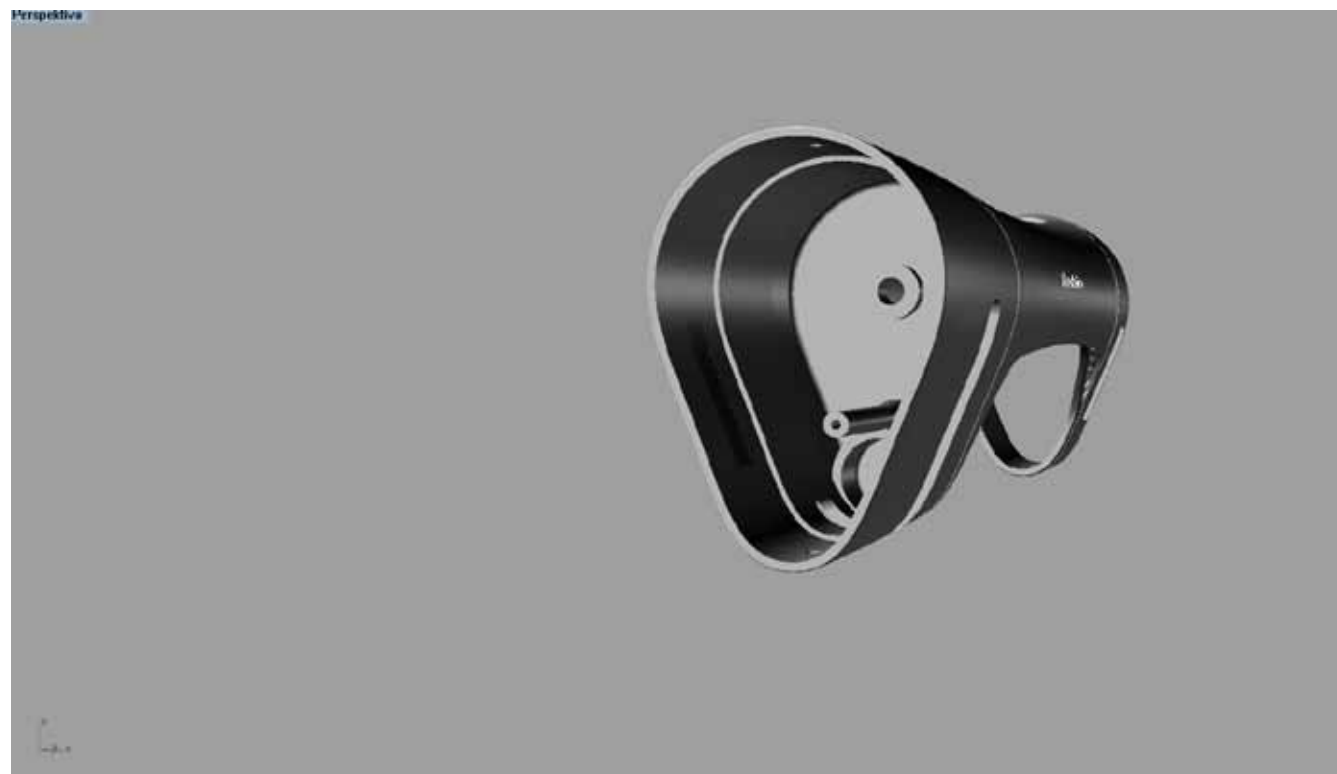


design of **technical assembly**
Electric plant made in cooperation with **Materialise**

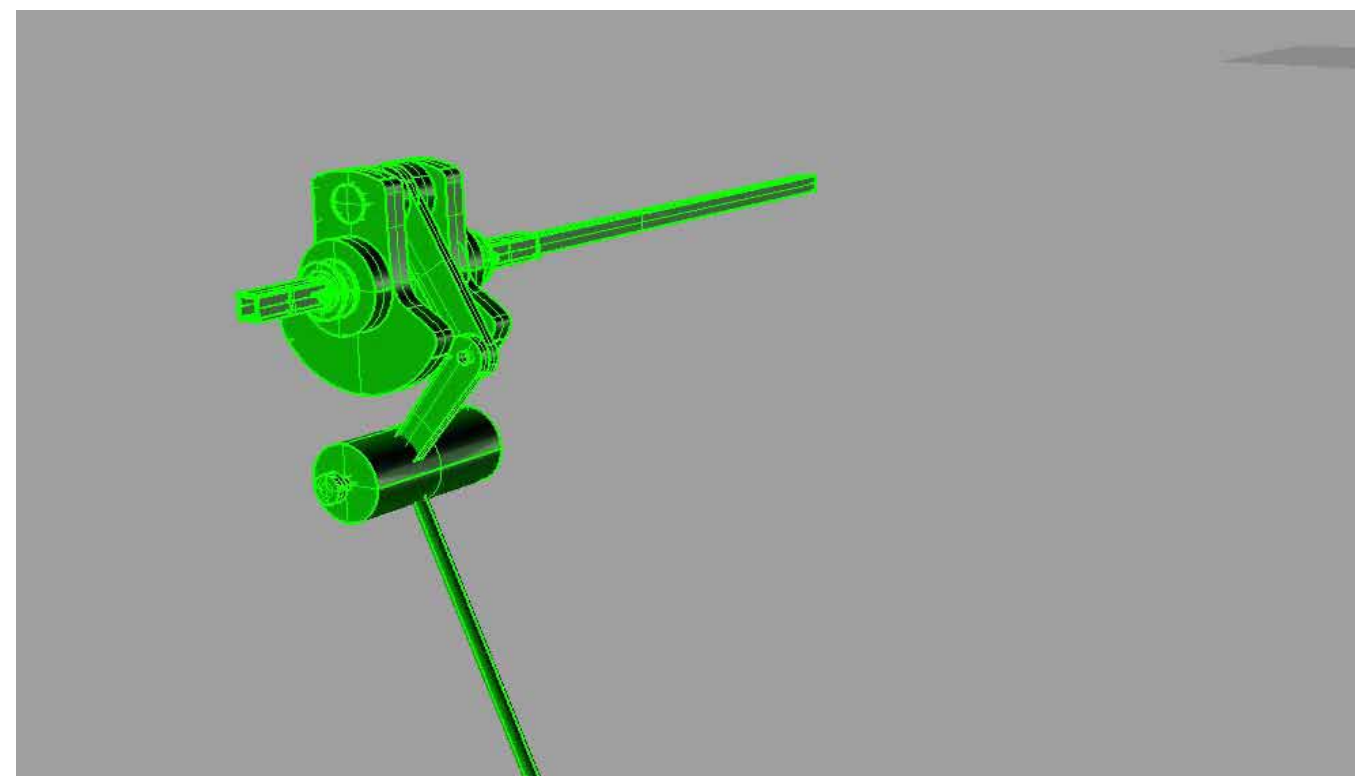
Nurbs Modeling of power plant

Energy of water/ model for rapid prototyping

model for rapid prototyping / Rhinoceros 4



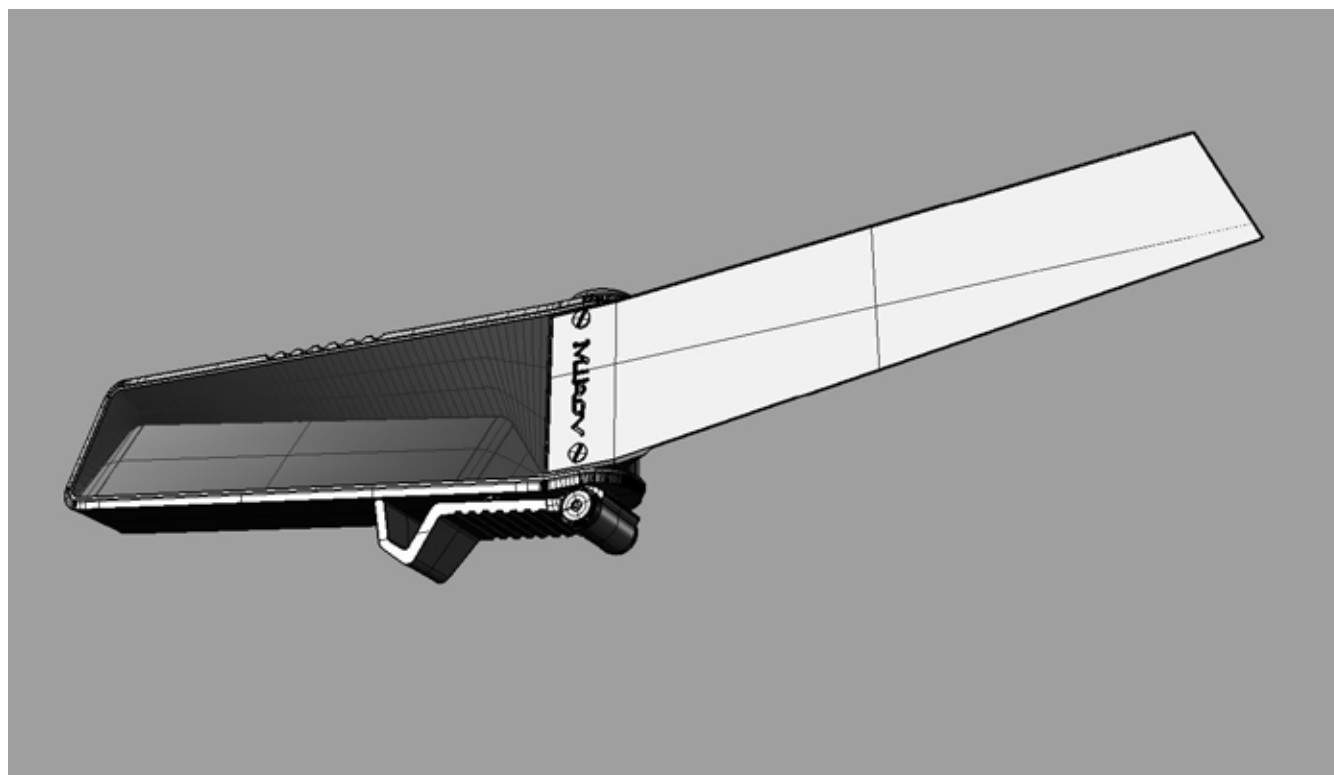
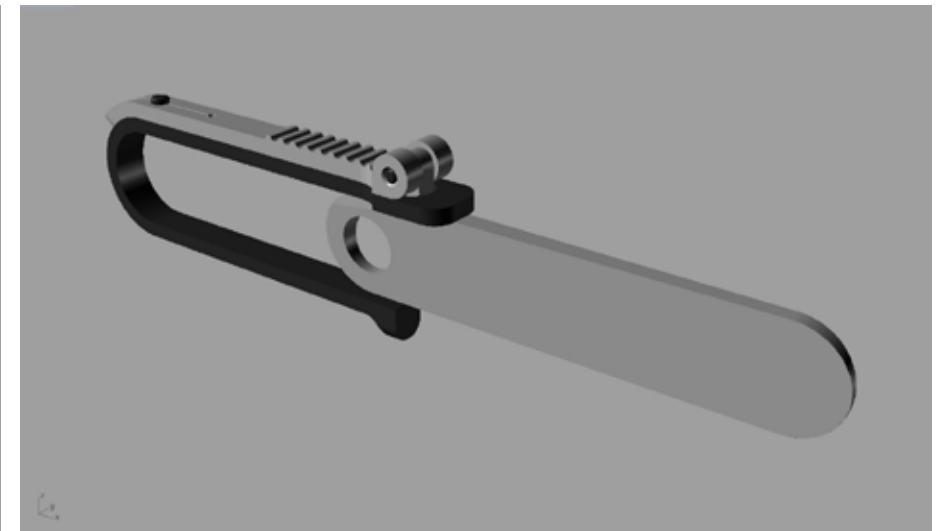
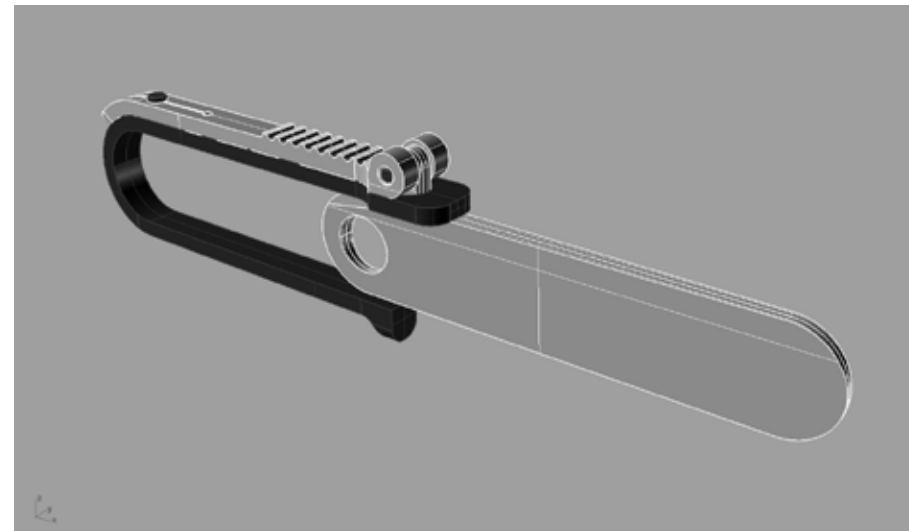
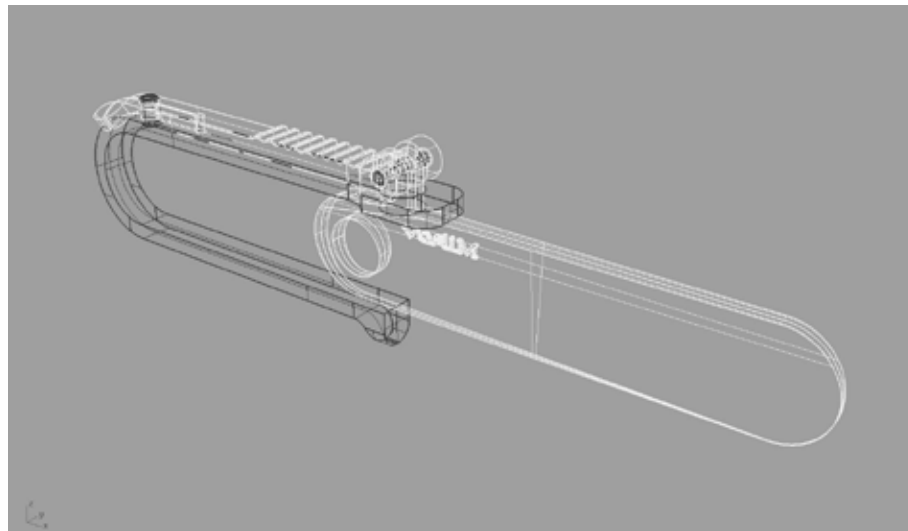
design of **segment of assembly**
Electric plant made in cooperation with Materialise



Nurbs Modeling of **Mikov knife**

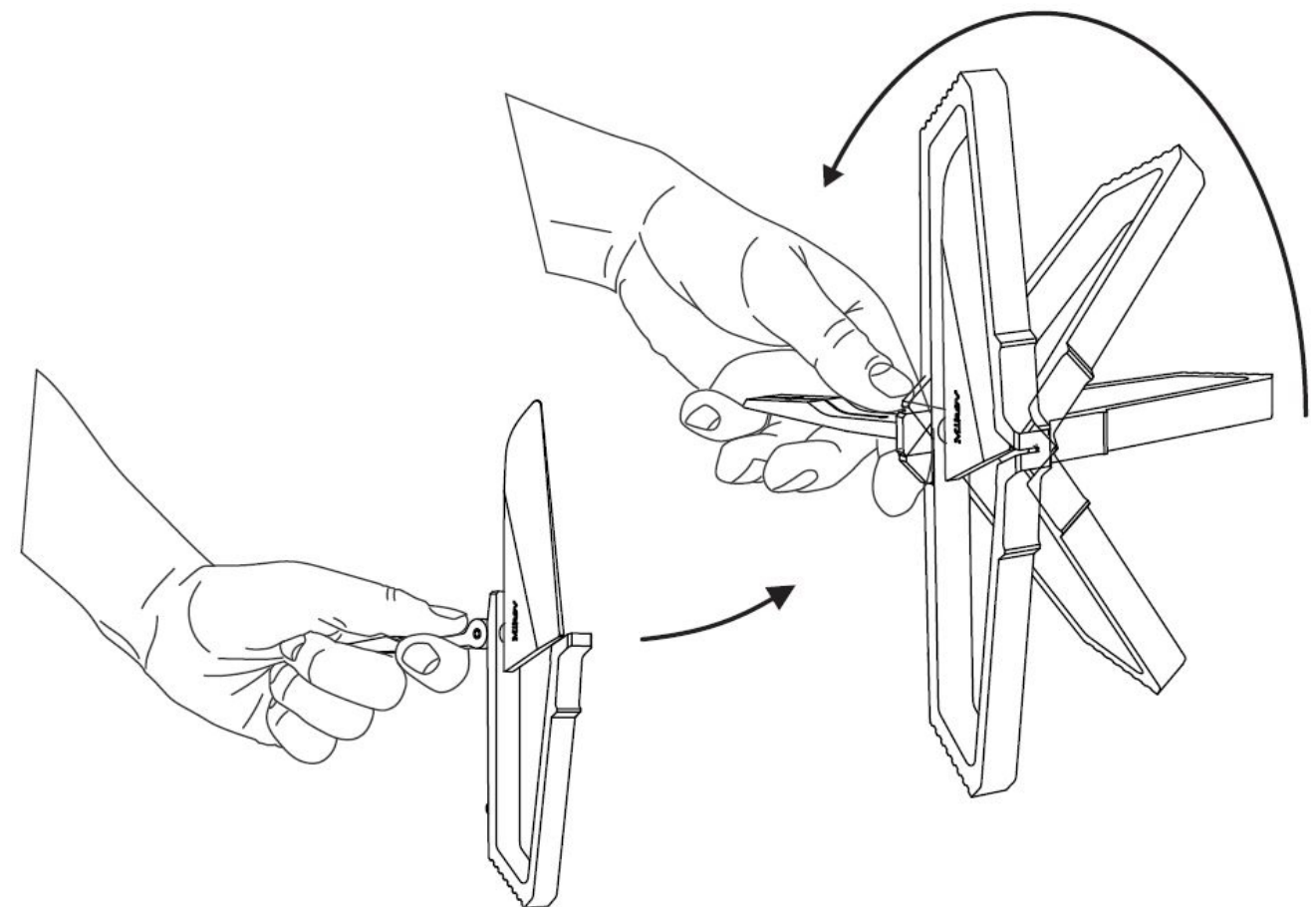
Technicly and dimensional specific model for production

Rhinoceros 4



design of **knife**

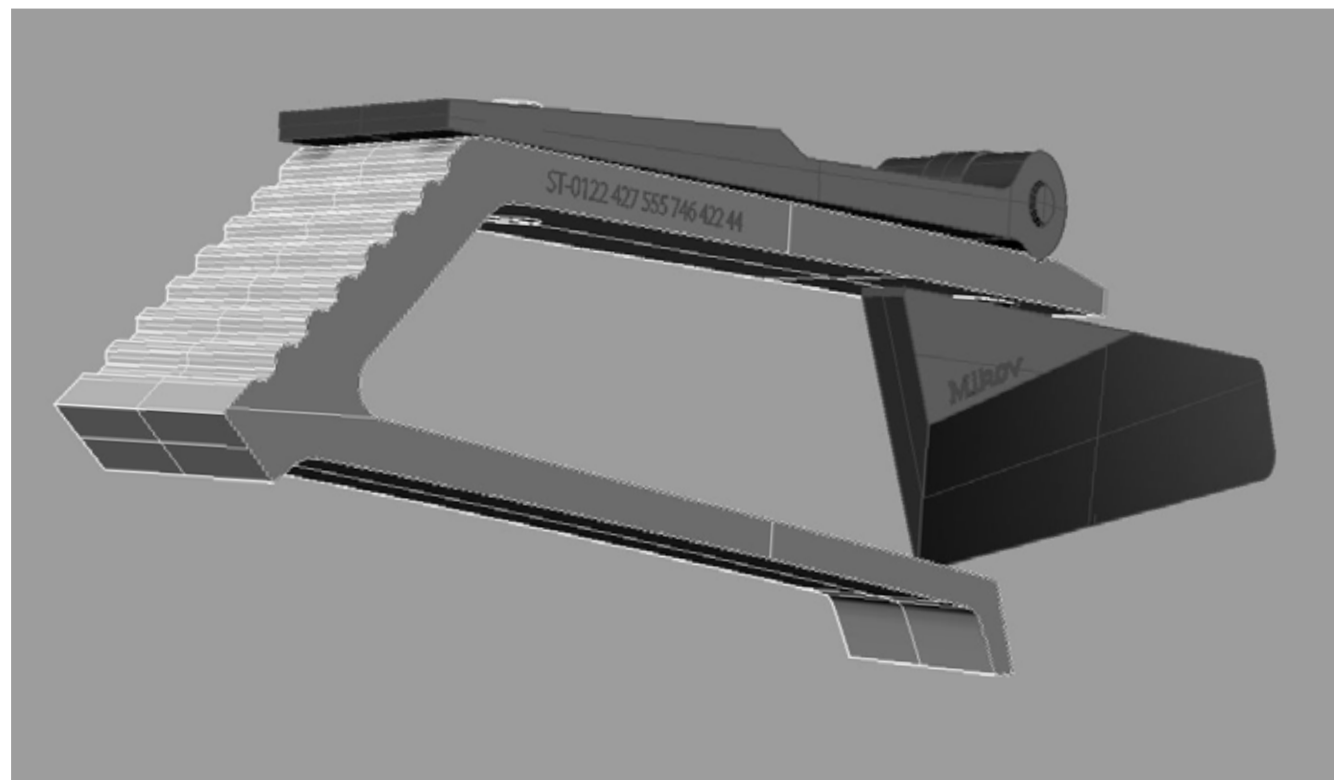
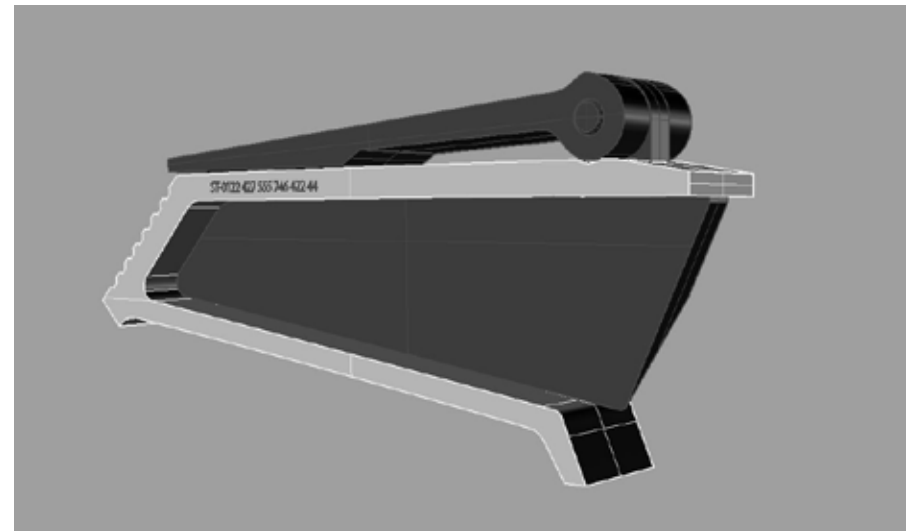
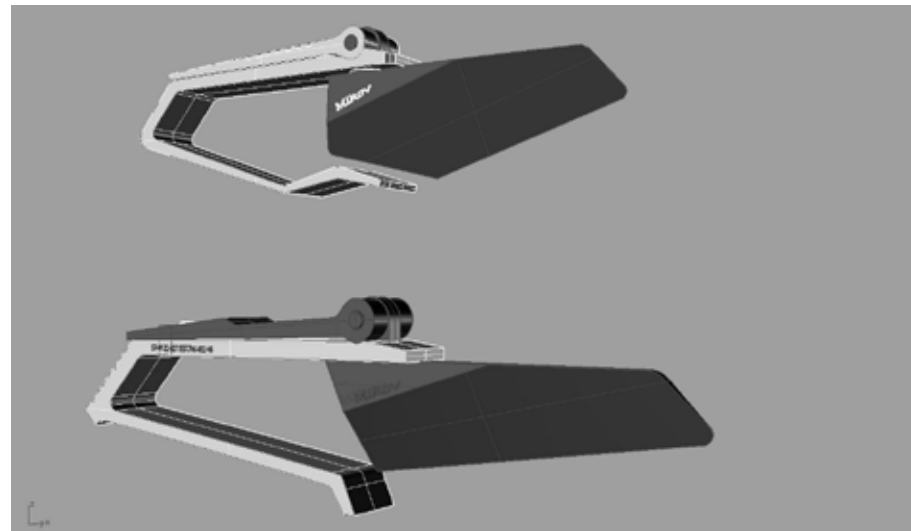
This is side foldable knife for your pocket



Nurbs Modeling of **Mikov** knife

Technicly and dimensional specific model for production

Rhinoceros 4



design of **knife**

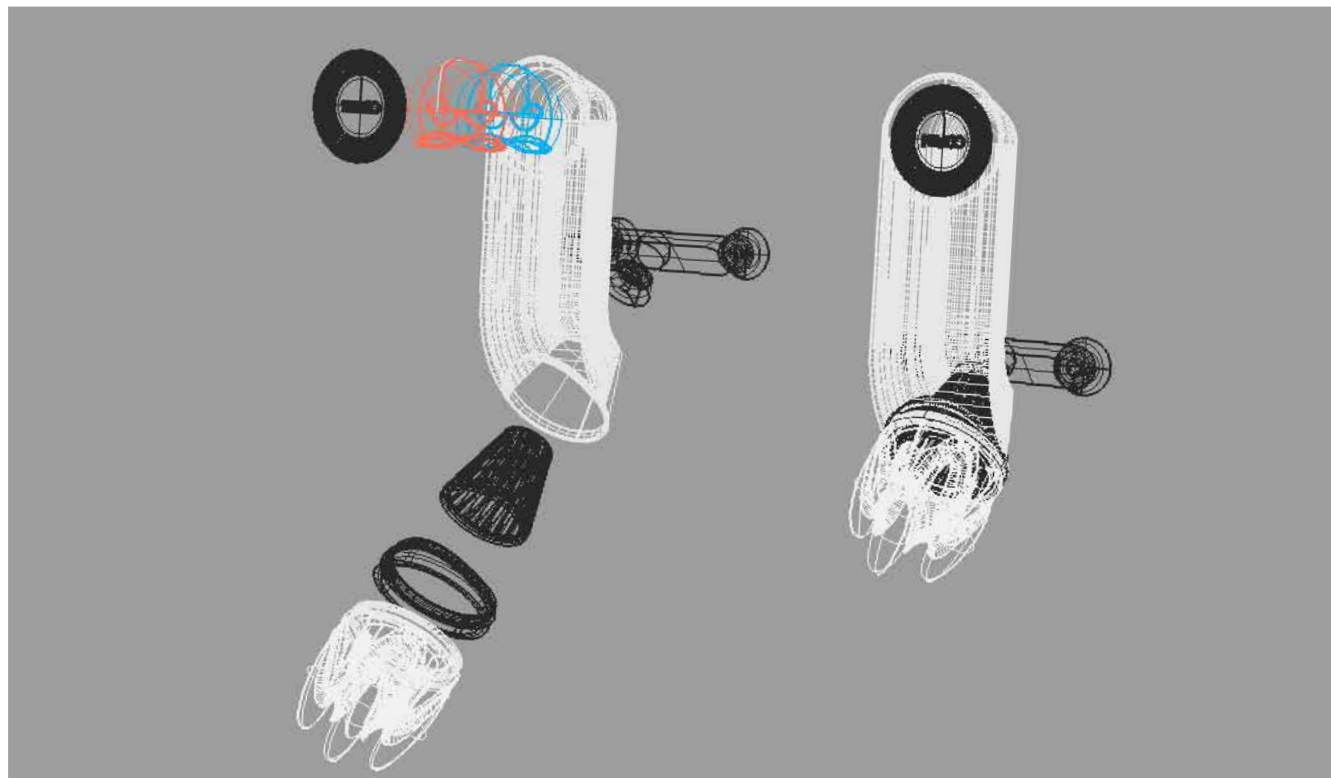
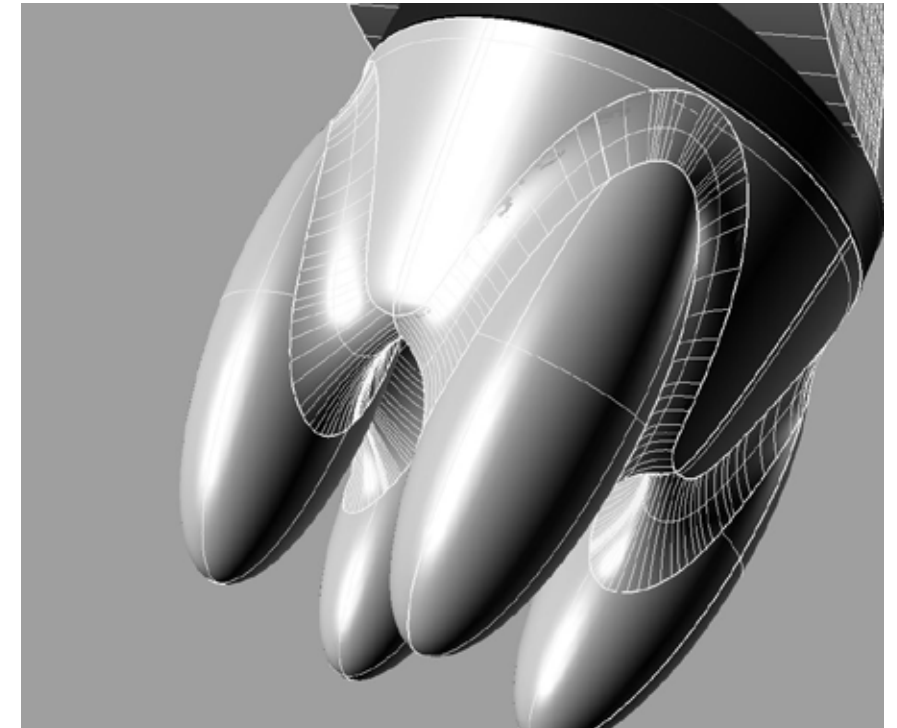
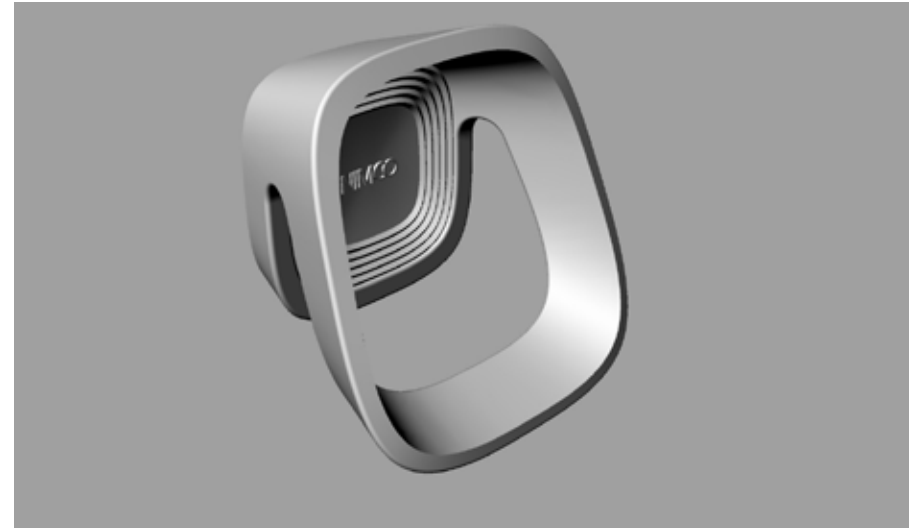
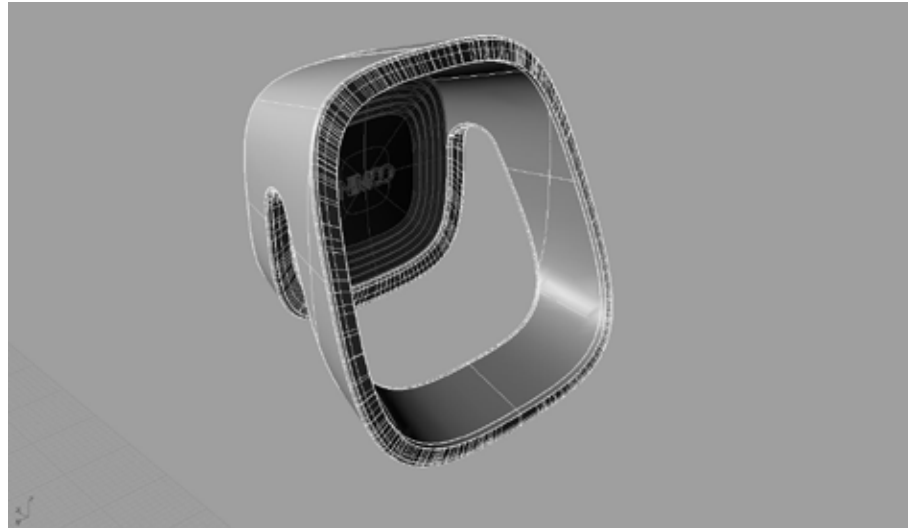
This is side foldable knife for your pocket



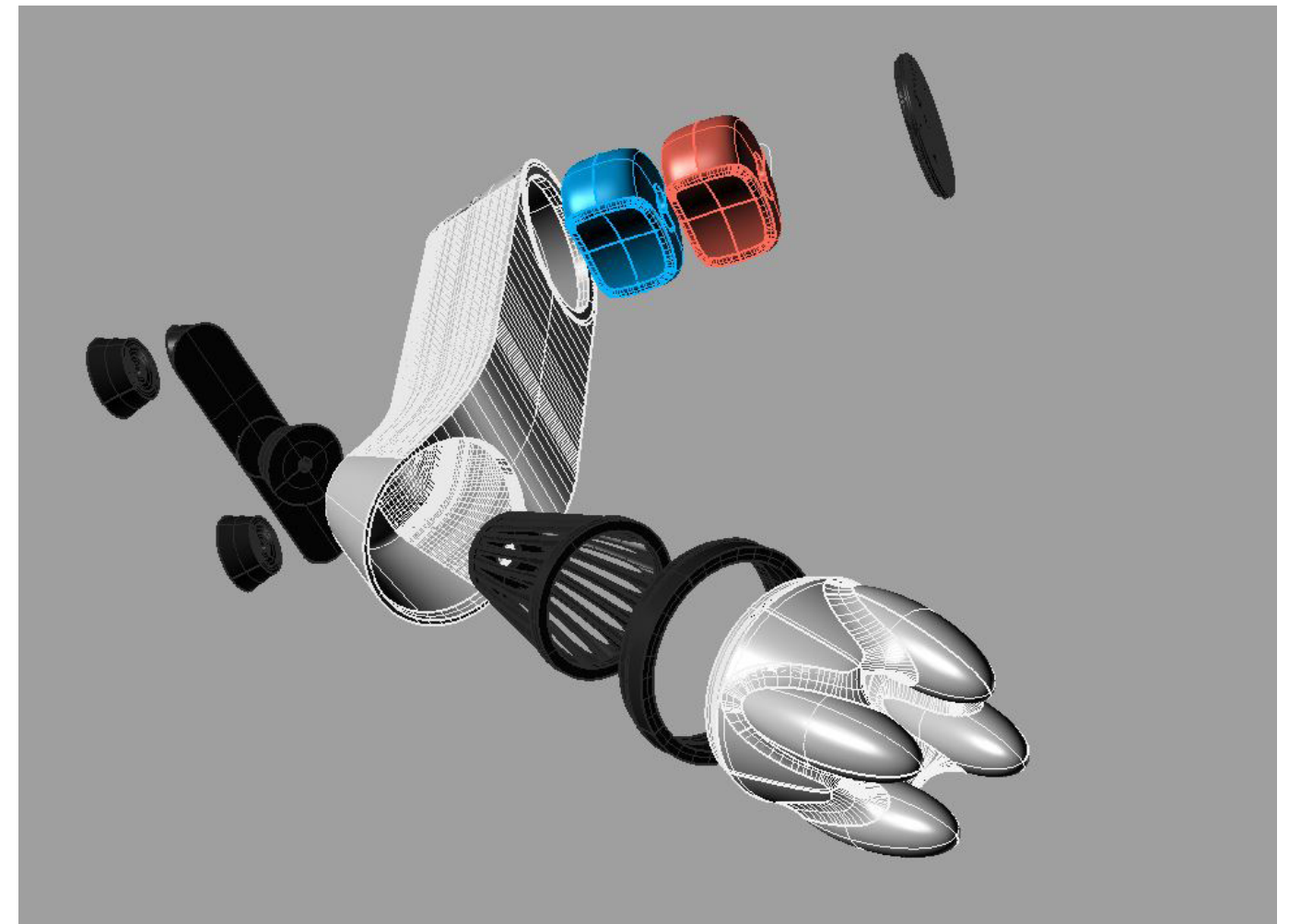
hanger and soap grater **Nimco**

Designed for production of porcelain bathroom equipment

Rhinoceros 4

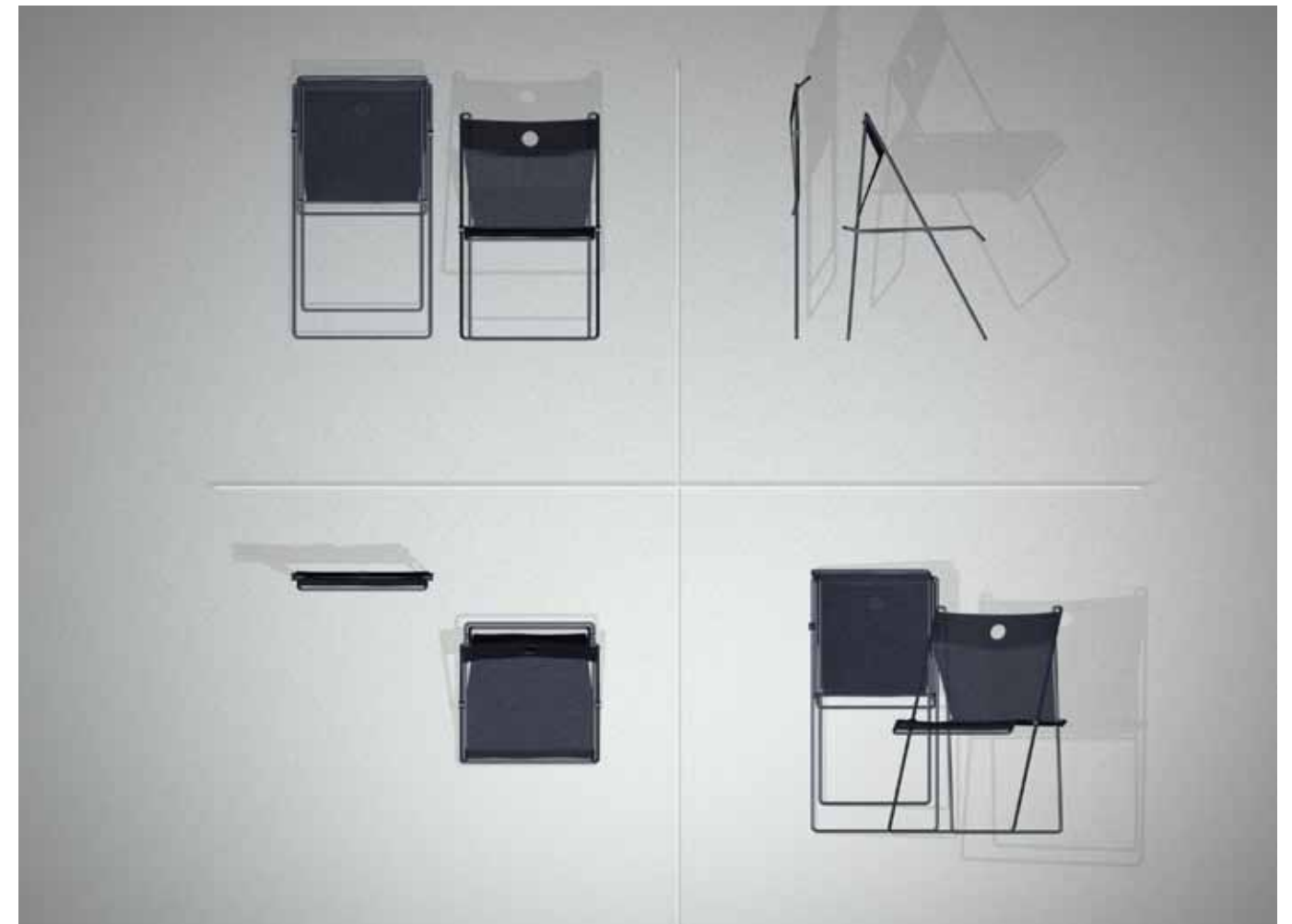
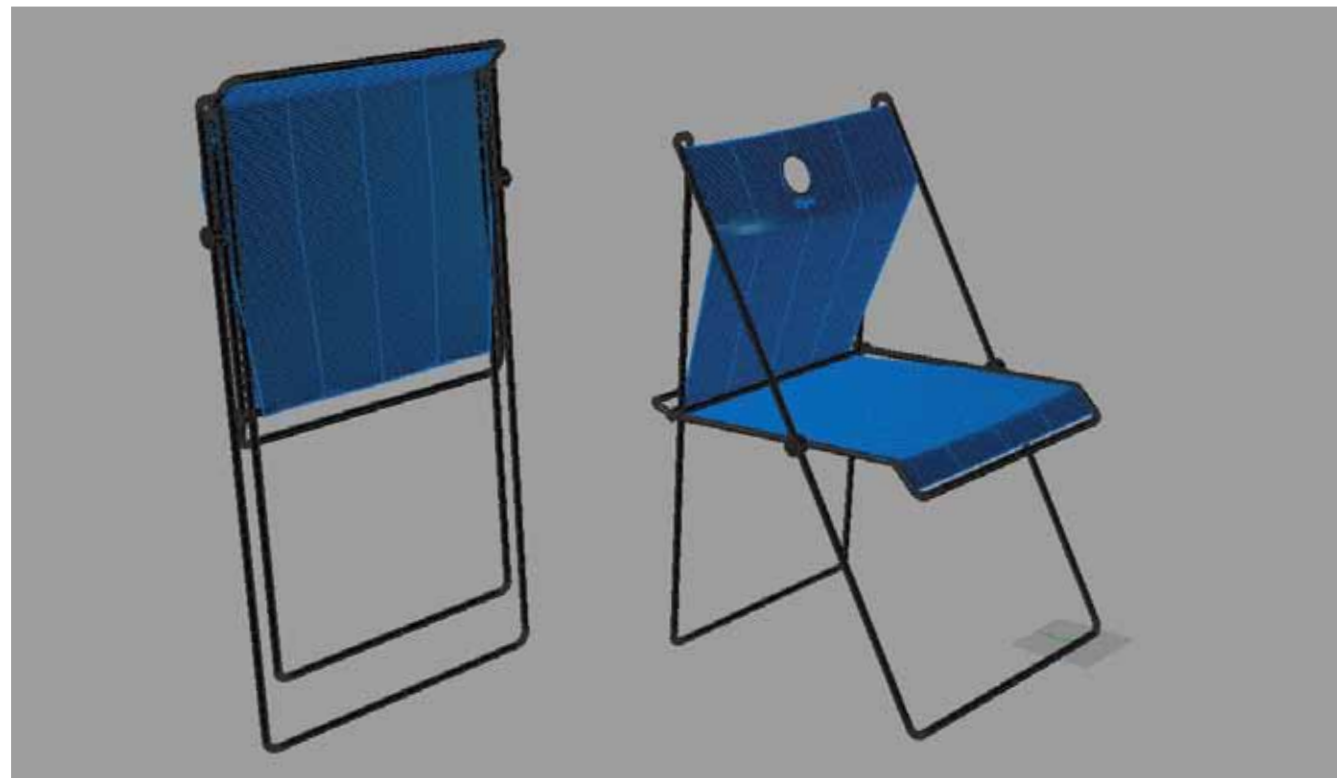
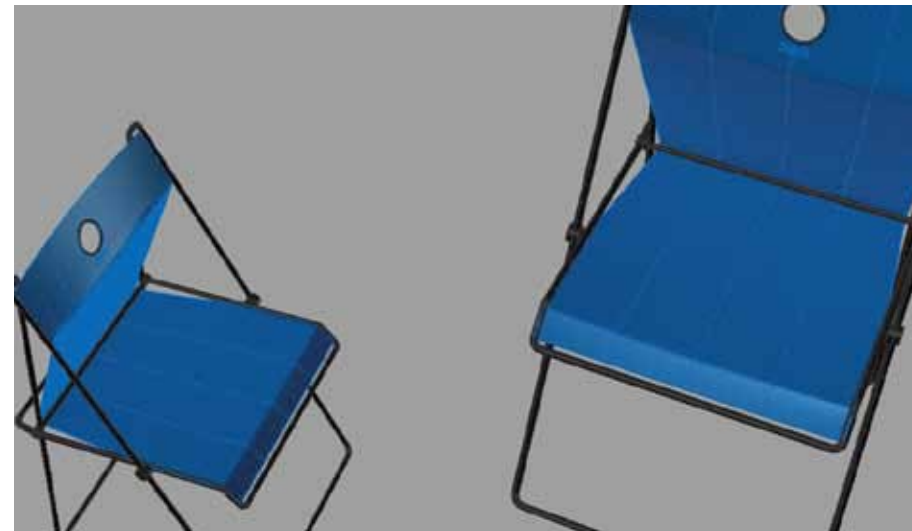
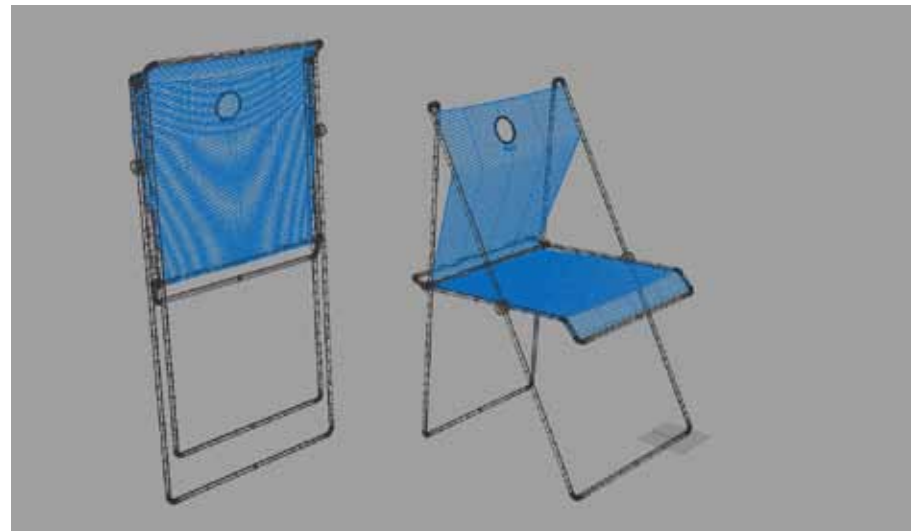


Complicated system for shredding
of soap



foldable **Chair**
metal and mesh

Rhinoceros 4



B I O

name:	Vít Fendrych
birth date:	05 / 12 / 1983
address:	Kámen 22, 582 42, ČR, Europe
tel:	+420 724 273 552
email:	fendrych.vit@gmail.com
web:	www.vitfendrych.com